



2026 PRODUCT CATALOG
TRUCK & BUS RADIAL (TBR) TYRES
EUROPE





Interpretation of different types of Truck Tyre Sizes

12.00 Nominal section width (inches)	R Construction (R=Radial)	24 Rim diameter (inches)	20PR Ply Rating	160/156 Load index (Single/Dual) 160 = 4,500 kgs 156 = 4,000 kgs	K Speed symbol (K = 110 km/h)
315 Nominal section width (mm)	80 Aspect Ratio (Percentage)	R Construction (R=Radial)	22.5 Rim diameter (inches)	156/150 Load index (Single/Dual) 156 = 4,000 kgs 150 = 3,350 kgs	L Speed symbol (L = 120 km/h)
12 Nominal section width (inches)	R Construction (R=Radial)	22.5 Rim diameter (inches)	152/148 Load index (Single/Dual) 152 = 3,550 kgs 148 = 3,150 kgs	M Speed symbol (M = 130 km/h)	

The **load index** is the numerical code associated with the maximum load a tyre can carry at the speed indicated by the tyre manufacturer.

• Load index equivalent table

LOAD INDEX	KG	LOAD INDEX	KG	LOAD INDEX	KG	LOAD INDEX	KG
111	1090	126	1700	141	2575	156	4000
112	1120	127	1750	142	2650	157	4125
113	1150	128	1800	143	2725	158	4250
114	1180	129	1850	144	2800	159	4375
115	1215	130	1900	145	2900	160	4500
116	1250	131	1950	146	3000	161	4625
117	1285	132	2000	147	3075	162	4750
118	1320	133	2060	148	3150	163	4875
119	1360	134	2120	149	3250	164	5000
120	1400	135	2180	150	3350	165	5150
121	1450	136	2240	151	3450	166	5300
122	1500	137	2300	152	3550	167	5450
123	1550	138	2360	153	3650	168	5600
124	1600	139	2430	154	3750	169	5800
125	1650	140	2500	155	3875	170	6000

The **speed symbol** indicates the speed at which the tyre can carry a load corresponding to its load under service conditions specified by the tyre manufacturer.

• Speed symbol equivalent table

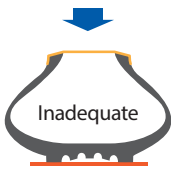
SPEED SYMBOL	SPEED (kph)
F	80
G	90
J	100
K	110
L	120
M	130
N	140



Tips to Optimize Tyre Life

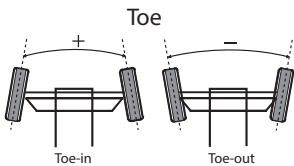
Inflation Pressure

- Inflate tyres based on their pressure capacity, load, speed and usage conditions.
- Tyres must be inflated appropriately.
 - Under-inflation is detrimental to the tyre. It can cause uneven wear and excessive heat generation thereby decreasing durability and fuel economy.
 - Over-inflation can lead to excessive tread wear in the central area of the tyre, hence shortening overall tyre life.
- Ideally, inflation pressure should be maintained and checked frequently.

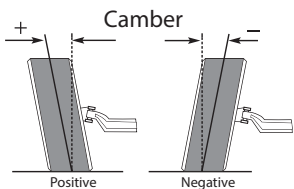


Wheel Alignment

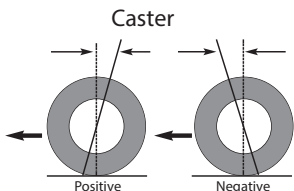
Poor wheel alignment can have a negative impact on handling, steering and stability of the vehicle. Three key issues must be considered to align the wheels properly.



Toe - The angle formed by two horizontal lines through the plane of both wheels. From the front, 'Toe-Ins' occur when the front side of the wheels are inclined towards the inside. 'Toe-Outs' occur when the rear side of the wheels are inclined towards the inside. Excessive 'Toe-In' wears the outside of the tyre. Excessive 'Toe-Out' wears the inside of the tyre.



Camber - The inclination of the tyres either inside or outside from the front view of the tyre. Make sure that tyres are aligned straight to optimize steering tyre wear and minimize irregular wear. Wear from positive camber occurs on the outside shoulder of the tyre; with negative camber, wear is on the inside shoulder.



Caster - Is the forward or rearward tilt of the steering axis with reference to a vertical line. This is usually a factor in vehicle handling, but can also affect tyre wear. Proper caster is important for directional stability. Improper caster can cause shimmy, excessive steering effort, pulling and shoulder wear on the steer tyres.



Application Guide Summary

STEER



DRIVE



TRAILER (FRT)



	STEER	DRIVE	TRAILER (FRT)
LONG HAUL	OH-102* OH-108* OH-119	OH-319	OH-111
REGIONAL	OH-107* OH-117* OH-119 OH-120 OH-121*	OH-301 OH-311 OH-320 OH-322	OH-118
MIXED(ON/OFF)	OH-201* OH-202+* OH-203* OH-204* OH-209* OH-210* OH-213* OH-306*	OH-303	
OFF-ROAD		OH-312 OH-312+ OH-402 OH-403	
URBAN	OH-501*		

*Steer/All Position



Application Guide Details

STEER



	Dimension	Pattern	PR	LI & SS
LONG HAUL	385/55R22.5	OH-108 / OH-119	20	160K
	355/50R22.5	OH-108	18	156K
	385/65R22.5	OH-102 / OH-108 / OH-119	20	160K
	385/65R22.5	OH-119	22	164K

REGIONAL	9.5R17.5	OH-117	14	129/127L
	215/75R17.5	OH-117	12	126/124M
	215/70R17.5	OH-117	12	126/124M
	225/75R17.5	OH-117	12	129/127M
	225/80R17.5	OH-117	14	123/122L
	235/75R17.5	OH-117	16	135/133M
	245/70R17.5	OH-117	16	136/134M
	245/70R19.5	OH-117	16	136/134M
	265/70R19.5	OH-120	16	140/138M
	285/70R19.5	OH-120	16	146/144M
	11R22.5	OH-107 / OH-117 / OH-121	16	148/145M
	12R22.5	OH-107 / OH-121	16	152/148M, 152/149K
	275/70R22.5	OH-107	16	148/145M
	295/60R22.5	OH-107+	16	150/147K
	295/80R22.5	OH-107 / OH-121	16	152/148M
	295/80R22.5	OH-107 / OH-121	18	154/150M
	315/60R22.5	OH-107+	16	154/148L
	315/70R22.5	OH-107	16	154/150L
	315/70R22.5	OH-107	18	156/150L
	315/80R22.5	OH-107 / OH-121	20	156/150L
315/80R22.5	OH-107 / OH-121	22	158/150L	
385/65R22.5	OH-119	20	160K	
385/65R22.5	OH-119	22	164K	

MIXED(ON/OFF)	11R22.5	OH-201	16	148/145L
	12R22.5	OH-209 / OH-213	18	152/149K
	13R22.5	OH-210	18	156/150K
	295/80R22.5	OH-201	16	152/148M
	295/80R22.5	OH-201	18	154/150M
	315/80R22.5	OH-201 / OH-209	20	156/150L
	315/80R22.5	OH-201	22	158/150L
	385/65R22.5	OH-203	20, 22	160K, 164K
	425/65R22.5	OH-306	20	165K
	445/65R22.5	OH-306	20	169K

URBAN	275/70R22.5	OH-501	18	152/149J
-------	-------------	--------	----	----------



Application Guide Details

DRIVE



	Dimension	Pattern	PR	LI & SS
LONG HAUL	315/70R22.5	OH-319	16	154/150L
	315/80R22.5	OH-319	20	156/150L
REGIONAL	9.5R17.5	OH-311	14	129/127L
	9.5R17.5	OH-311	18	143/141J
	215/75R17.5	OH-311	14	128/126M
	215/75R17.5	OH-311	16	135/133K
	225/75R17.5	OH-311	12	129/127M
	235/75R17.5	OH-311	14	132/130M
	235/75R17.5	OH-311	18	143/141J
	245/70R19.5	OH-322	16	136/134M
	11R22.5	OH-301	16	148/145M
	11R22.5	OH-320	16	148/145M
	12R22.5	OH-301	16	152/148M
	245/70R17.5	OH-322	16	136/134M
	265/70R19.5	OH-322	16	140/138M
	285/70R19.5	OH-322	16	146/144M
	275/70R22.5	OH-320	16	148/145M
	295/60R22.5	OH-320	16	150/147K
	295/80R22.5	OH-301	16	152/148M
	295/80R22.5	OH-320	16	152/148M
	315/60R22.5	OH-320	16	154/148L
315/70R22.5	OH-301 / OH-320	16	154/150L	
315/80R22.5	OH-301 / OH-320	20	156/150L	
MIXED(ON/OFF)	265/70R19.5	OH-303	18	143/141J
	12R22.5	OH-312	18	152/149K
	11R22.5	OH-303	16	148/145L
	11R22.5	OH-312	16	148/145K
	295/80R22.5	OH-312	16	152/148K
	13R22.5	OH-312+	18	156/150K
	315/80R22.5	OH-312+	20	156/150K
OFF-ROAD	315/80R22.5	OH-402	20	156/150K
	11R22.5	OH-403	16	146/143G
	12R22.5	OH-403	18	154/150G
	13R22.5	OH-403	18	156/150G
URBAN	275/70R22.5	OH-501	18	152/149J

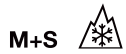


Application Guide Details

TRAILER



	Dimension	Pattern	PR	LI & SS
LONG HAUL	285/70R19.5	OH-108	18	150/148J
	385/55R19.5	OH-111	18	156J
	435/50R19.5	OH-111	22	160J
	445/45R19.5	OH-111	22	160J
	385/55R22.5	OH-108	20	160K
	385/65R22.5	OH-102 / OH-108	20	160K
	385/65R22.5	OH-108	22	164K
	455/40R22.5	OH-111	18	160J
REGIONAL	9.5R17.5	OH-117	18	143/141J
	215/75R17.5	OH-117	16	135/133L
	215/75R17.5	OH-117	18	143/141K
	235/75R17.5	OH-117	18	143/141L
	245/70R17.5	OH-117	18	143/141J
	245/70R19.5	OH-118	18	141/140J
	265/70R19.5	OH-118	18	143/141J
MIXED(ON/OFF)	265/70R19.5	OH-204	18	143/141K
	385/65R22.5	OH-203	20, 22	160K, 164K
	425/65R22.5	OH-306	20	165K
	445/65R22.5	OH-306	20	169K



OH - 102

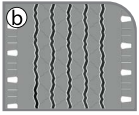
All-position tyre for long haul applications.

OH - 102



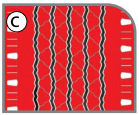
#English

- a) All-position tyre for long haul applications innovative stepped ribs increase traction ability.
- b) Special compound reduces heat build-up when running at high speeds.
- c) Wider tread for maximum wear resistance and improved mileage.



#Spanish • Neumáticos para transporte largas distancias

- a) Costillas escalonadas innovadoras que aumentan la capacidad de tracción.
- b) El compuesto especial reduce la acumulación de calor a velocidades altas.
- c) Una banda de rodamiento más ancha para una mayor resistencia de desgaste y kilometraje mejorado.



#Portuguese • Pneu para todas as posições em aplicações de longa distância.

- a) Pneu para todas as posições em aplicações de longa distância. As nervuras escalonadas inovadoras aumentam a capacidade de tração.
- b) Composto especial reduz o acúmulo de calor em altas velocidades.
- c) Banda de rodagem mais larga para resistência máxima ao desgaste e maior quilometragem.

Size	PR	Load Index	Speed Symbol	Tread Depth			
				mm			
385/65R22.5	20	160	K	15.0	C	A	74dB/B



Regrooving Guidelines

Size	D: Regrooving Depth	W: Regrooving Width
	mm	mm
385/65R22.5	2.5	4.0 - 5.0





M+S



OH - 107

All-position tyre for regional applications for trucks and buses.

OH - 107



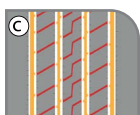
#English

- a) Five ribs and four straight and wide-grooves for excellent traction and precise handling.
- b) Solid shoulder ribs and special tread compound resists manoeuvring wear.
- c) Linear grooves help in quicker drainage of water and kerfs on the inner ribs enhance traction.



#Spanish • Todas posiciones, uso regional camiones y autobuses

- a) Cinco costillas y cuatro ranuras anchas y rectas para una excelente tracción y manejo preciso.
- b) Costillas y hombros sólidos y banda de rodamiento resistente al roce por maniobras.
- c) Las ranuras lineales ayudan a un drenaje más rápido de agua y cortes en las costillas interiores mejorando la tracción.



#Portuguese • Pneu para todas as posições em aplicações regionais para caminhões e ônibus.

- a) Cinco nervuras e quatro sulcos retos e largos para excelente tração e manuseio preciso.
- b) Costelas de ombro sólidas e composto especial resistem ao desgaste ao manobrar.
- c) Sulcos lineares ajudam na drenagem rápida da água, e cortes nas nervuras internas aprimoram a tração.



Size	PR	Load Index	Speed Symbol	Tread Depth			
				mm			
10.00R20	16	147/143	L	15.0	D	A	70dB/A
10.00R20	18	149/145	J	15.0	D	A	70dB/A
11R22.5	16	148/145	M	15.0	C	A	70dB/A
12R22.5	16	152/148	M	16.0	C	A	70dB/A
255/70R22.5	16	140/137	L	13.5	C	A	70dB/A
275/70R22.5	16	148/145	M	15.0	C	A	70dB/A
275/70R22.5	18	152/148	J	15.0	C	A	70dB/A
295/60R22.5*	16	150/147	K	12.5	C	A	70dB/A
295/80R22.5	16	152/148	M	15.0	C	A	70dB/A
295/80R22.5	18	154/150	M	15.0	C	A	70dB/A
315/60R22.5*	16	154/148	L	12.5	C	A	70dB/A
315/70R22.5	16	154/150	L	15.0	C	A	70dB/A
315/70R22.5	18	156/150	L	15.0	C	A	70dB/A
315/80R22.5	20	156/150	L	16.0	C	A	70dB/A
315/80R22.5	22	158/150	L	16.0	C	A	70dB/A

* These sizes are available in OH-107+

Regrooving Guidelines



Size	D: Regrooving Depth	W: Regrooving Width
	mm	mm
10.00 R20	2.5	7.0 - 8.0
11R22.5	2.5	7.0 - 8.0
12R22.5	2.5	7.0 - 8.0
255/70R22.5	2.5	7.0 - 8.0
275/70R22.5	2.5	7.0 - 8.0
295/60R22.5	2.5	9.0 - 10.0
295/80R22.5	2.5	7.0 - 8.0
315/60R22.5	2.5	9.0 - 10.0
315/70R22.5	2.5	9.0 - 10.0
315/80R22.5	2.5	9.0 - 10.0



M+S



OH - 108

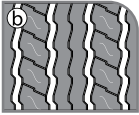
Steer / All-Position tyre for long haul applications.

OH - 108



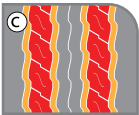
#English

- a) Reinforced construction increases performance under overload and high-speed service.
- b) Special compound ensures longer mileage and rugged casing withstands multiple retreads.
- c) Uniquely shaped tread blocks and grooves offer superior grip on dry and wet surfaces.



#Spanish • Neumáticos de remolque para largo recorrido

- a) Estructura reforzada que mejora el rendimiento tanto en sobrecarga como en servicios de alta velocidad.
- b) El compuesto especial asegura un mayor kilometraje y cubierta que resiste varios recauchutados.
- c) Bloques y ranuras únicos en la banda de rodadura que ofrecen un mayor agarre en superficies secas y húmedas.



#Portuguese • Pneu para eixos de direção/todas as posições em aplicações de longa distância

- a) Construção reforçada aumenta o desempenho tanto em sobrecarga quanto em serviço de alta velocidade.
- b) Composto especial garante maior quilometragem, e a carcaça robusta suporta múltiplos recapamentos.
- c) Blocos de banda de rodagem e sulcos com formato exclusivo oferecem aderência superior em superfícies secas e molhadas.



Size	PR	Load Index	Speed Symbol	Tread Depth			
				mm			
285/70R19.5	18	150/148	J	14.0	C	B	73dB/B
355/50R22.5	18	156	K	13.5	C	B	73dB/B
385/55R22.5	20	160	K	13.0	C	B	73dB/B
385/65R22.5	20	160	K	14.0	C	B	73dB/B
385/65R22.5	-	164	K	14.0	C	B	73dB/B



Regrooving Guidelines

Size	D: regrooving Depth	W: regrooving Width
	mm	mm
285/70R19.5	2.5	7.0 - 8.0
355/50R22.5	2.5	7.0 - 8.0
385/55R22.5	2.5	7.0 - 8.0
385/65R22.5	2.5	7.0 - 8.0



M+S



FRT

OH-111

Exclusively designed for free-rolling trailer axle positions for long haul applications.

OH-111



#English

- a) Optimal rolling friction due to energy efficient compound.
- b) Robust and rugged construction withstands severe loading.
- c) Wider tread pattern lead to optimal footprint area that reduces wear rate.



#Spanish • Exclusivo remolque, posiciones largo recorrido

- a) Fricción de rodadura óptimo debido al compuesto de eficiencia energética.
- b) Estructura robusta que resiste cargas pesadas.
- c) El diseño de banda de rodamiento más ancho permite una mayor pisada reduciendo el índice de desgaste.

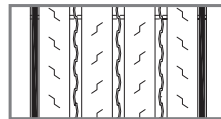


#Portuguese • Exclusivamente projetado para eixos de reboque com rotação livre para aplicações de longa distância

- a) Atrito de rotação ideal devido ao composto eficiente em energia.
- b) Construção robusta suporta cargas severas.
- c) Padrão de banda de rodagem mais largo resulta em área de contato ideal, reduzindo a taxa de desgaste.



Size	PR	Load Index	Speed Symbol	Tread Depth			
				mm			
385/55R19.5	18	156	J	14.8	C	B	73dB/B
435/50R19.5	-	160	J	12.5	C	B	73dB/B
445/45R19.5	-	160	J	13.5	C	B	73dB/B
455/40R22.5	-	160	J	13.5	C	B	70dB/A



Regrooving Guidelines

Size	D: Regrooving Depth	W: Regrooving Width
	mm	mm
385/55R19.5	2.5	8.0 - 9.0
435/50R19.5	2.5	8.0 - 9.0
445/45R19.5	2.5	9.0 - 10.0
455/40R22.5	2.5	9.0 - 10.0



OH - 117

All-position tyre for regional applications.

OH-117



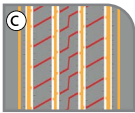
#English

- a) Optimized mold profile resists uneven wear.
- b) Unique shoulder design and sipes on center ribs offer enhanced wet braking and steering.
- c) Stone ejectors on each groove prevent retention of stones, hence ensuring improved traction and grip.



#Spanish • Neumático para todas las posiciones para aplicaciones regionales

- a) Perfil de molde optimizado para resistir el desgaste irregular.
- b) Diseño único de la shoulder y Sipes en las costillas centrales que ofrecen un mejor rendimiento en frenado y dirección sobre mojado.
- c) Expulsores de piedras en cada ranura previenen la retención de piedras, lo que garantiza una mejor tracción y agarre.



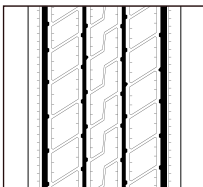
#Portuguese • Pneu para todas as posições para aplicações regionais

- a) Perfil de molde otimizado para resistir ao desgaste irregular.
- b) Design exclusivo da shoulder e Sipes nas nervuras centrais oferecem melhor desempenho de frenagem e direção em condições de pista molhada.
- c) Ejetores de pedras em cada ranhura evitam a retenção de pedras, garantindo assim melhor tração e aderência.



Size	PR	Load Index	Speed Symbol	Tread Depth			
				mm			
7.00R16	14	118/114	L	11.0	C	C	73dB/B
7.50R16*	14	122/118	L	11.0	C	C	73dB/B
7.50R16	16	124/120	L	11.0	C	C	73dB/B
7.50R16*	18	129/128	L	11.0	C	C	73dB/B
8.25R16	16	132/130	L	12.5	C	C	73dB/B
8.25R16*	18	134/129	K	12.5	C	C	73dB/B
9.5R17.5*	14	129/127	L	14.0	D	C	73dB/B
9.5R17.5	18	143/141	J	14.0	D	C	73dB/B
215/70R17.5*	12	126/124	M	13.0	D	C	73dB/B
215/75R17.5*	12	126/124	M	13.0	C	C	73dB/B
215/75R17.5	16	135/133	L	13.0	C	C	73dB/B
215/75R17.5*	18	143/141	K	13.0	C	C	73dB/B
225/75R17.5*	12	129/127	M	13.0	C	C	73dB/B
225/80R17.5	14	123/122	L	12.0	D	C	73dB/B
235/75R17.5*	16	135/133	M	12.0	C	C	73dB/B
235/75R17.5*	18	143/141	L	12.0	C	C	73dB/B
245/70R17.5*	16	136/134	M	13.0	C	C	73dB/B
245/70R17.5*	18	143/141	J	13.0	C	C	73dB/B
245/70R19.5*	16	136/134	M	14.0	C	C	73dB/B
11.00R20	16	150/146	K	15.0	D	B	73dB/B
11.00R20*	18	152/149	K	15.0	C	B	73dB/B
11R22.5	16	148/145	M	15.0	D	B	73dB/B

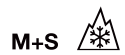
* Newly added size



Regrooving Guidelines

Size	D: regrooving Depth	W: Regrooving Width
	mm	mm
7.00R16	2.5	5.0 - 6.0
7.50R16	2.5	5.0 - 6.0
8.25R16	2.5	5.0 - 6.0
9.5R17.5	2.5	7.0 - 8.0
215/70R17.5	2.5	7.0 - 8.0
215/75R17.5	2.5	7.0 - 8.0
225/75R17.5	2.5	7.0 - 8.0

Size	D: Regrooving Depth	W: Regrooving Width
	mm	mm
225/80R17.5	2.5	7.0 - 8.0
235/75R17.5	2.5	7.0 - 8.0
245/70R17.5	2.5	7.0 - 8.0
245/70R19.5	2.5	7.0 - 8.0
11.00R20	2.5	7.0 - 8.0
11R22.5	2.5	7.0 - 8.0



OH - 118

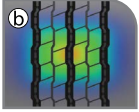
Exclusively designed for free-rolling trailer axle positions for regional applications.

OH - 118



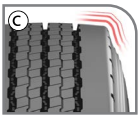
#English

- a) Unique tread design with solid shoulder ribs and variable sipes on inner ribs that deliver enhanced mileage, better fuel efficiency and lower noise.
- b) Optimized tread profile with square footprint that reduces wear rate.
- c) Round solid shoulders resist lateral scrubbing on tight corners in trailer axle usage.



#Spanish • Diseñado exclusivamente para remolques de rodadura libre con posiciones de eje y uso regional

- a) Diseño único de la banda de rodadura con nervaduras sólidas en los hombros y laminillas variables en las nervaduras interiores que proporcionan un mayor kilometraje, mejor eficiencia de combustible y menor ruido.
- b) Perfil de la banda de rodadura optimizado con huella cuadrada que reduce el índice de desgaste.
- c) Los hombros redondeados y sólidos resisten la fricción lateral en curvas cerradas con el uso de ejes de remolque.



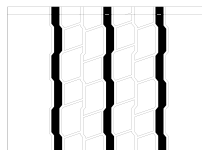
#Portuguese • Exclusivamente projetado para eixos de reboque com rotação livre para aplicações regionais

- a) Design exclusivo de banda de rodagem com costelas sólidas nos ombros e lamelas variáveis nas nervuras internas proporciona quilometragem aprimorada, maior eficiência de combustível e menor ruído.
- b) Perfil otimizado da banda de rodagem com pegada quadrada reduz a taxa de desgaste.
- c) Ombros sólidos e arredondados resistem ao atrito lateral em curvas fechadas no uso de eixo de reboque.



Size	PR	Load Index	Speed Symbol	Tread Depth			
				mm			
205/65R17.5	18	132/130	J	11.0	C	B	73dB/B
245/70R19.5	18	141/140	J	12.5	C	B	73dB/B
265/70R19.5	18	143/141	J	14.0	C	B	73dB/B

Regrooving Guidelines



Size	D: Regrooving Depth	W: Regrooving Width
	mm	mm
205/65R17.5	2.5	6.0 - 7.0
245/70R19.5	2.5	7.0 - 8.0
265/70R19.5	2.5	7.0 - 8.0



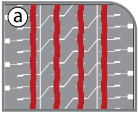
M+S



OH - 119

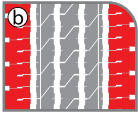
Steer-axle tyre for long haul and regional applications.

OH - 119



#English

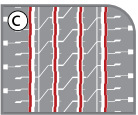
- a) Optimized groove design for long haul and regional usage.
- b) Solid shoulder design for better handling and steering performance.
- c) Stone ejectors in all grooves protect crown area from stone penetration for safe driving.



#Spanish

• Neumático para eje de dirección para aplicaciones de larga distancia y transporte regional

- a) Diseño de ranuras optimizado para largas distancias y uso regional.
- b) Diseño de hombro sólido para un mejor manejo y conducción.
- c) Eyectores de piedra en todas las ranuras que protegen el área de la corona de la penetración de piedras para una conducción segura.

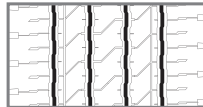


#Portuguese

• Pneu para eixo de direção para aplicações de longa distância e regionais

- a) Design de sulco otimizado para uso de longa distância e regional.
- b) Design sólido do ombro para melhor desempenho de direção.
- c) Ejetores de pedras em todos os sulcos protegem a área da coroa contra a penetração de pedras para uma condução segura.

Size	PR	Load Index	Speed Symbol	Tread Depth			
				mm			
385/55R22.5	20	160	K	15.0	C	A	69dB/A
385/65R22.5	20	160	K	15.0	C	A	72dB/B
385/65R22.5	22	164	K	15.0	C	A	72dB/B



Regrooving Guidelines

Size	D: Regrooving Depth	W: Regrooving Width
	mm	mm
385/55R22.5	2.5	7.0 - 8.0
385/65R22.5	2.5	7.0 - 8.0



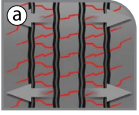
M+S



OH - 120

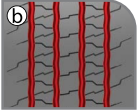
Steer-axle tyre for regional applications.

OH - 120



#English

- a) Wider tread width and 3D-sipe design provide excellent traction and enhanced steering performance in dry, wet and snow conditions.
- b) Optimized groove design to avoid damage from stone penetration.
- c) Strong shoulder rib design to resist uneven wear.



#Spanish • Neumático de eje direccional para uso regional

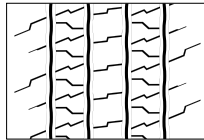
- a) La mayor anchura de la banda de rodadura y el diseño de laminillas 3D proporcionan una excelente tracción y un mejor rendimiento de la conducción en seco, mojado y nieve.
- b) Diseño optimizado de los surcos para evitar daños por la penetración de piedras.
- c) Diseño robusto de las nervaduras del hombro para resistir el desgaste irregular.



#Portuguese • Pneu para eixo de direção para aplicações regionais

- a) Largura de banda de rodagem mais ampla e design de lamelas 3D proporcionam excelente tração e desempenho aprimorado de direção em condições secas, molhadas e de neve.
- b) Design de sulcos otimizado para evitar danos causados por penetração de pedras.
- c) Design resistente do ombro para resistir ao desgaste irregular.

Size	PR	Load Index	Speed Symbol	Tread Depth			
				mm			
205/75R17.5	12	124/122	M	12.0	D	C	74dB/B
265/70R19.5	16	140/138	M	13.0	C	B	74dB/B
285/70R19.5	16	146/144	M	13.0	C	B	74dB/B
305/70R19.5	18	148/145	M	14.0	C	B	74dB/B



Regrooving Guidelines

Size	D: Regrooving Depth	W: Regrooving Width
	mm	mm
205/75R17.5	2.5	6.0 - 7.0
265/70R19.5	2.5	7.0 - 8.0
285/70R19.5	2.5	7.0 - 8.0
305/70R19.5	2.5	7.0 - 8.0

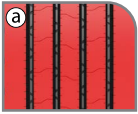


M+S

OH - 121

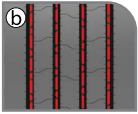
All-position tyre for regional applications.

OH - 121



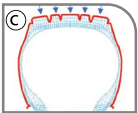
#English

- a) Modern tread design with superior tread compound that resists uneven wear and gives longer mileage.
- b) Stone ejectors in all four grooves prevent damage caused by stone retention.
- c) Reinforced casing to support heavy load and retreadability.



#Spanish • Neumático para todas las posiciones para aplicaciones regionales.

- a) Diseño moderno del neumático con una mezcla de caucho superior que resiste el desgaste irregular y ofrece mayor kilometraje.
- b) Los expulsadores de piedras en las cuatro ranuras previenen daños causados por la retención de piedras.
- c) Carcasa reforzada para soportar cargas pesadas y permitir la recapado.



#Portuguese • Pneu para todas as posições para aplicações regionais.

- a) Design moderno de banda de rodagem com composto superior que resiste ao desgaste irregular e oferece maior quilometragem.
- b) Ejetores de pedras em todas as quatro ranhuras previnem danos causados pelo aprisionamento de pedras.
- c) Carcaça reforçada para suportar cargas pesadas e possibilitar a recapagem.



Size	PR	Load Index	Speed Symbol	Tread Depth			
				mm			
9.00R20*	14	140/137	L	15.0	D	B	72dB/B
10.00R20	16	147/143	L	16.0	D	B	72dB/B
10.00R20	18	149/145	K	16.0	D	B	72dB/B
11.00R20	16	150/146	K	16.5	C	B	72dB/B
11.00R20	18	152/149	K	16.5	C	B	72dB/B
11R22.5	16	148/145	M	17.0	C	B	72dB/B
12R22.5	16	152/148	M	16.5	C	B	72dB/B
12R22.5	18	152/149	K	16.5	C	B	72dB/B
275/80R22.5*	16	149/146	M	16.5	D	B	72dB/B
295/80R22.5	16	152/148	M	17.0	C	B	72dB/B
295/80R22.5	18	154/150	M	17.0	C	B	72dB/B
315/80R22.5	20	156/150	L	17.0	C	B	72dB/B
315/80R22.5	22	158/150	L	17.0	C	B	72dB/B

* Newly added size

Regrooving Guidelines

Size	D: Regrooving Depth	W: Regrooving Width
	mm	mm
9.00R20	2.5	7.0 - 8.0
10.00R20	2.5	7.0 - 8.0
11.00R20	2.5	7.0 - 8.0
11R22.5	2.5	7.0 - 8.0
12R22.5	2.5	7.0 - 8.0
275/80R22.5	2.5	7.0 - 8.0
295/80R22.5	2.5	7.0 - 8.0
315/80R22.5	2.5	7.0 - 8.0



M+S



OH - 201

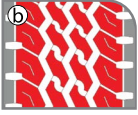
All-position tyre for mixed service applications.

OH - 201



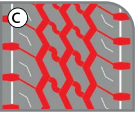
#English

- a) Lugs on shoulders withstand impacts and enhance traction performance in both dry and wet conditions.
- b) Special zigzag tread design that offers extraordinary resistance against chipping and cutting in off-road conditions.
- c) Deeper tread delivers longer mileage and wider grooves help in effective water evacuation.



#Spanish • Todas posiciones, aplicación mixta

- a) Agarraderas en hombros que resisten los impactos y mejoran la tracción en condiciones secas y húmedas.
- b) Diseño especial de banda de rodamiento en zigzag que ofrece una resistencia extraordinaria contra los cortes y desdoblado en condiciones más extremas.
- c) Banda de rodamiento más profunda que ofrece un mayor kilometraje y ranuras más anchas que ayudan a una evacuación de agua más efectiva.



#Portuguese • Pneu para todas as posições para aplicações de serviço misto

- a) Tacos nos ombros resistem a impactos e aprimoram o desempenho de tração em condições secas e molhadas.
- b) Design especial de banda de rodagem em zigue-zague que oferece resistência extraordinária contra lascamento e corte em condições off-road
- c) Banda de rodagem mais profunda proporciona maior quilometragem, e sulcos mais largos auxiliam na eficaz evacuação da água



Size	PR	Load Index	Speed Symbol	Tread Depth			
				mm			
7.50R16	14	122/118	L	13.5	D	B	71dB/A
8.25R16	16	132/130	L	13.5	D	B	71dB/A
10.00R20	16	147/143	L	18.0	D	B	71dB/A
10.00R20	18	149/145	J	18.0	D	B	71dB/A
11.00R20	16	150/146	K	16.5	D	B	71dB/A
11.00R20	18	152/149	K	16.5	D	B	71dB/A
12.00R20	18	154/150	K	16.0	D	B	71dB/A
11R22.5	16	148/145	L	16.0	D	B	71dB/A
295/80R22.5	16	152/148	M	17.0	D	B	71dB/A
295/80R22.5	18	154/150	M	17.0	D	B	73dB/B
315/80R22.5	20	156/150	L	15.5	D	B	73dB/B
315/80R22.5	22	158/150	L	15.5	D	B	73dB/B
325/95R24	22	162/160	K	19.0	D	B	71dB/A

Regrooving Guidelines



Size	D: Regrooving Depth	W: Regrooving Width
	mm	mm
7.50R16	2.5	7.0 - 8.0
8.25R16	2.5	7.0 - 8.0
10.00R20	2.5	7.0 - 8.0
11.00R20	2.5	7.0 - 8.0
12.00R20	2.5	7.0 - 8.0
11R22.5	2.5	7.0 - 8.0
295/80R22.5	2.5	7.0 - 8.0
315/80R22.5	2.5	7.0 - 8.0
325/95R24	2.5	7.0 - 8.0

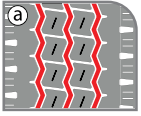


M+S

OH - 202+

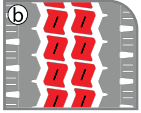
All-position tyre for mixed service applications.

OH - 202+



#English

- a) Wider zigzag grooves offer superb water evacuation and excellent performance on and off-road.
- b) Unique blocks design delivers outstanding traction and grip.
- c) Reinforced carcass to withstand severe overloading.



#Spanish • Todas posiciones, aplicación mixta

- a) Los anchos surcos en zigzag, ofrecen una eficaz evacuación del agua y rendimiento excelente en situaciones de carretera y fuera de carretera.
- b) Un exclusivo diseño de los bloques proporciona una excelente tracción y adherencia.
- c) Las carcassas reforzadas soportan sobrecargas severas.

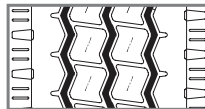


#Portuguese • Pneu para todas as posições para aplicações de serviço misto

- a) Sulcos mais largos em zigue-zague oferecem excelente evacuação de água e desempenho excepcional - em estradas e fora delas.
- b) Design exclusivo de blocos proporciona tração e aderência excepcionais.
- c) Carcaça reforçada para resistir a sobrecargas severas.



Size	PR	Load Index	Speed Symbol	Tread Depth			
				mm			
12.00R24	20	160/156	K	14.0	C	A	73dB/B



Regrooving Guidelines

Size	D: regrooving Depth	W: Regrooving Width
	mm	mm
12.00R24	2.5	7.0 - 8.0



M+S



OH - 203

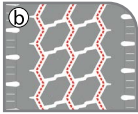
All-position tyre for mixed applications.

OH - 203



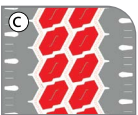
#English

- a) Special zigzag tread design resists cuts and chips in mixed service applications.
- b) Stone ejectors in all three grooves protect the tyre from stone retention improving retreadability.
- c) Innovative tread block design and well positioned sipes give remarkable traction in all weather conditions.



#Spanish • Todas posiciones, aplicación mix

- a) Diseño especial de banda de rodamiento en zigzag que resiste cortes y desconchado en conducciones mixtas.
- b) Eyectores de piedra en las 3 ranuras que protegen el neumático de la retención de piedras mejorando el recauchutado.
- c) El diseño innovador del bloque de la banda de rodamiento y la posición de las laminillas ofrecen una tracción inmejorable en todas las condiciones climáticas.

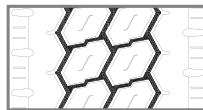


#Portuguese • Pneu para todas as posições para aplicações mistas

- a) Design especial de banda de rodagem em zigue-zague resiste a cortes e lascamentos em aplicações mistas.
- b) Ejetores de pedras em todos os 3 sulcos protegem o pneu contra a retenção de pedras, melhorando a capacidade de reforma.
- c) Design inovador de blocos de banda de rodagem e lamelas bem posicionadas proporcionam tração notável em todas as condições climáticas.



Size	PR	Load Index	Speed Symbol	Tread Depth			
				mm			
385/65R22.5	20	160	K	16.5	C	A	73dB/B
385/65R22.5	22	164	K	16.5	C	A	73dB/B



Regrooving Guidelines

Size	D: regrooving Depth	W: regrooving Width
	mm	mm
385/65R22.5	2.5	8.0 - 9.0



M+S

OH - 204

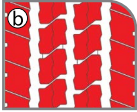
All-position tyre for mixed service applications.

OH - 204



#English

- a) Specially engineered belt structure enhances casings durability.
- b) Well positioned tread blocks deliver enhanced traction on dry and wet surfaces.
- c) Optimum bead strength to withstand severe stress and deliver stable driving.



#Spanish • Todas posiciones, aplicación mixta

- a) Estructura de banda especialmente diseñada que mejora la durabilidad de la cubierta.
- b) La posición de los bloques de la banda de rodamiento ofrece una mejor tracción en superficies secas y húmedas.
- c) Fuerza del talón inmejorable para resistir altas presiones y ofrecer una conducción estable, ermöglichen.

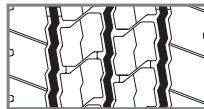


#Portuguese • Pneu para todas as posições para aplicações mistas

- a) Estrutura de cintas especialmente projetada aprimora a durabilidade da carcaça.
- b) Blocos de banda de rodagem bem posicionados proporcionam tração aprimorada em superfícies secas e molhadas.
- c) Resistência ideal do talão para suportar estresse severo e oferecer uma condução estável.

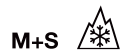


Size	PR	Load Index	Speed Symbol	Tread Depth	ED	Wet Grip	Noise
				mm			
265/70R19.5	18	143/141	K	15.0	D	A	72dB/B



Regrooving Guidelines

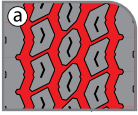
Size	D: regrooving Depth	W: Regrooving Width
	mm	mm
265/70R19.5	2.5	7.0 - 8.0



OH - 209

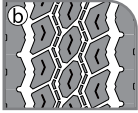
All-position tyre for mixed service applications.

OH - 209



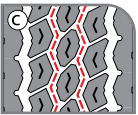
#English

- a) Deeper tread assists in increasing mileage and service life of the tyres.
- b) Siping on the large tread blocks delivers outstanding traction and abrasion resistance capability.
- c) Stone ejectors placed in central grooves prevent retention of stones.



#Spanish • Todas posiciones, aplicación mixta




- a) La banda de rodamiento más profunda ayuda en el aumento del kilometraje y durabilidad de los neumáticos.
- b) Las laminillas en los bloques grandes de la banda de rodamiento ofrecen una tracción inmejorable y capacidad de resistencia de abrasión.
- c) Los eyectores de piedra situados en las ranuras centrales previenen la retención de piedras.



#Portuguese • Pneu para todas as posições para aplicações mistas

- a) Banda de rodagem mais profunda auxilia no aumento da quilometragem e na vida útil dos pneus.
- b) Siping nos grandes blocos de banda de rodagem proporciona tração excepcional e resistência à abrasão.
- c) Ejetores de pedras colocados nos sulcos centrais evitam a retenção de pedras.



Size	PR	Load Index	Speed Symbol	Tread Depth			
				mm			
12R22.5	18	152/149	K	16.5	D	B	73dB/B
315/80R22.5	20	156/150	L	15.5	C	B	73dB/B

Regrooving Guidelines



Size	D: Regrooving Depth	W: Regrooving Width
	mm	mm
12R22.5	2.5	7.0 - 8.0
315/80R22.5	2.5	7.0 - 8.0



M+S



OH - 210

All-position tyre for mixed service applications.

OH - 210



#English

- a) Wider zigzag grooves offer superb water evacuation and excellent performance on and off-road.
- b) Unique blocks design deliver outstanding traction and grip.
- c) Reinforced carcass to withstand severe overloading.



#Spanish • Todas posiciones, aplicación mixta

- a) Los surcos profundos en zigzag ofrecen una excelente evacuación del agua y excelente conducción en carretera y fuera de carretera.
- b) Un exclusivo diseño de los bloques proporciona una excelente tracción y adherencia.
- c) Las carcasas reforzadas soportan sobrecargas severas.



#Portuguese • Pneu para todas as posições para aplicações mistas

- a) Sulcos mais largos em zigue-zague oferecem excelente evacuação de água e desempenho excepcional em estradas e fora delas.
- b) Design exclusivo de blocos proporciona tração e aderência excepcionais.
- c) Carcaça reforçada para resistir a sobrecargas severas.



Size	PR	Load Index	Speed Symbol	Tread Depth			
				mm			
12.00R20	18	154/150	K	14.5	D	A	71dB/A
13R22.5	18	156/150	K	18.5	D	A	71dB/A

Regrooving Guidelines



Size	D: Regrooving Depth	W: Regrooving Width
	mm	mm
12.00R20	2.5	7.0 - 8.0
13R22.5	2.5	7.0 - 8.0



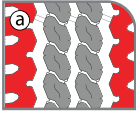
M+S



OH - 213

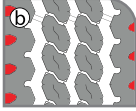
All-position tyre for mixed service applications.

OH - 213



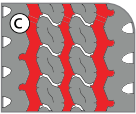
#English

- a) Zigzag tread pattern that enhances traction and precise handling on different road conditions.
- b) Deep and wide grooves give longer mileage and better water evacuation.
- c) Lugs on shoulders withstand impacts and enhance traction performance on both dry and wet conditions.



#Spanish • Neumático para todas las posiciones para aplicaciones de servicio mixto

- a) Patrón de banda de rodadura en zigzag que mejora la tracción y el manejo preciso en diferentes condiciones de carretera.
- b) Ranuras profundas y anchas que proporcionan mayor kilometraje y mejor evacuación del agua.
- c) Los tacos en los hombros resisten impactos y mejoran el rendimiento de tracción tanto en condiciones secas como mojadas.



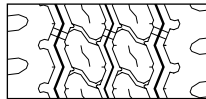
#Portuguese • Pneu para todas as posições para aplicações de serviço misto

- a) Padrão de banda de rodagem em zigue-zague que melhora a tração e o manuseio preciso em diferentes condições de estrada.
- b) Ranhuras profundas e largas oferecem maior quilometragem e melhor evacuação de água.
- c) Lamelas nos ombros suportam impactos e melhoram o desempenho de tração tanto em condições secas quanto molhadas.

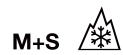


Size	PR	Load Index	Speed Symbol	Tread Depth			
				mm			
11.00R20	18	152/149	K	18.0	C	C	73dB/B
12.00R20	18	154/150	K	18.5	C	C	73dB/B
12.00R20	20	156/153	K	18.5	C	C	73dB/B
12R22.5	18	152/149	K	18.0	C	C	73dB/B

Regrooving Guidelines



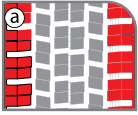
Size	D: Regrooving Depth	W: Regrooving Width
	mm	mm
11.00R20	2.5	7.0 - 8.0
12.00R20	2.5	7.0 - 8.0
12R22.5	2.5	7.0 - 8.0



OH - 301

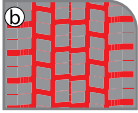
Drive-axle tyre for regional applications.

OH - 301



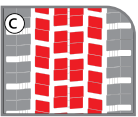
#English

- a) Wide open shoulder grooves deliver additional traction.
- b) Deeper grooves give longer mileage and better water evacuation.
- c) Well-positioned tread blocks deliver enhanced traction on dry and wet surfaces.



#Spanish • Transmisión en aplicaciones regionales

- a) Estructura de banda especialmente diseñada para mejorar la durabilidad de la cubierta.
- b) Bloques de la banda de rodamiento que ofrecen una tracción mejorada en superficies secas y húmedas.
- c) Fuerza del talón inmejorable para resistir condiciones severas y proporcionar una conducción estable.



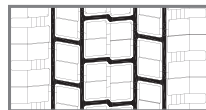
#Portuguese • Pneu para eixo de tração em aplicações regionais

- a) Sulcos amplos nos ombros oferecem tração adicional.
- b) Sulcos mais profundos proporcionam maior quilometragem e melhor evacuação da água.
- c) Blocos de banda de rodagem bem posicionados proporcionam tração aprimorada em superfícies secas e molhadas.



Size	PR	Load Index	Speed Symbol	Tread Depth			
				mm			
10.00R20	16	147/143	L	18.0	D	B	75dB/B
11.00R20	16	150/146	K	16.0	D	B	75dB/B
11R22.5	16	148/145	M	19.5	D	B	75dB/B
12R22.5	16	152/148	M	22.0	D	B	75dB/B
295/75R22.5	16	148/145	M	22.0	D	B	75dB/B
295/80R22.5	16	152/148	M	22.5	D	B	75dB/B
315/70R22.5	16	154/150	L	22.0	D	B	75dB/B
315/80R22.5	20	156/150	L	22.5	D	B	75dB/B

Regrooving Guidelines



Size	D: Regrooving Depth	W: Regrooving Width
	mm	mm
10.00R20	2.5	6.0 - 7.0
11.00R20	2.5	6.0 - 7.0
11R22.5	2.5	6.0 - 7.0
12R22.5	2.5	7.0 - 8.0
295/75R22.5	2.5	7.0 - 8.0
295/80R22.5	2.5	7.0 - 8.0
315/70R22.5	2.5	7.0 - 8.0
315/80R22.5	2.5	7.0 - 8.0



M+S



OH - 303

Drive-axle tyre for mixed service applications.

OH-303



#English

- a) Exceptional open shoulder design for drive-axle use.
- b) Wide lugs that offer firm grip.
- c) Deeper tread prolongs tyre life and offers remarkable traction.



#Spanish • Neumático de eje motriz para servicio mixto.




- a) Excepcional diseño de hombro abierto para eje motriz.
- b) Tacos anchos que ofrecen un agarre firme.
- c) La banda de rodadura profunda prolonga la duración del neumático y ofrece una tracción notable.



#Portuguese • Pneu para eixo de tração em aplicações mistas

- a) Design excepcional de ombro aberto para uso no eixo de tração.
- b) Tacos largos oferecem aderência firme.
- c) Banda de rodagem mais profunda prolonga a vida útil do pneu e oferece tração notável.

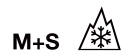


Size	PR	Load Index	Speed Symbol	Tread Depth			
				mm			
265/70R19.5	18	143/141	J	16.0	C	B	73dB/B
8.25R20	16	139/137	K	16.0	C	B	73dB/B
10.00R20	16	147/143	L	18.0	C	B	73dB/B
10.00R20	18	149/145	J	18.0	C	B	73dB/B
11.00R20	16	150/146	K	20.5	C	B	73dB/B
11R22.5	16	148/145	L	18.0	C	B	73dB/B

Regrooving Guidelines

Size	D: Regrooving Depth	W: Regrooving Width
	mm	mm
265/70R19.5	2.5	6.0 - 7.0
8.25R20	2.5	6.0 - 7.0
10.00R20	2.5	6.0 - 7.0
11.00R20	2.5	6.0 - 7.0
11R22.5	2.5	6.0 - 7.0





OH - 306

All-position tyre for mixed service applications.

OH - 306



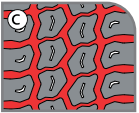
#English

- Wide tread pattern ensures maximum contact with the surface, hence prevents irregular wear, broad shoulders offer firm grip and improve corner handling.
- Uniform lug design provides the ability to bear load evenly.
- Deeper and wider grooves increase mileage and multiple retreads.



#Spanish • Todas posiciones, aplicación mixta

- El diseño ancho de la banda de rodadura asegura el máximo contacto con la superficie y por tanto previene el desgaste irregular del neumático. La anchura de los hombros ofrece un mejor agarre y estabilidad en curvas.
- El diseño uniforme de la llanta proporciona gran capacidad para soportar cargas uniformemente.
- Los surcos más profundos y amplios aumentan el kilometraje y permiten múltiples recauchutados.



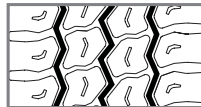
#Portuguese • Pneu para todas as posições para aplicações mistas

- Padrão de banda de rodagem larga garante contato máximo com a superfície, evitando desgaste irregular, ombros largos oferecem aderência firme e melhoram o manuseio em curvas.
- Design uniforme de blocos proporciona capacidade de suportar a carga de maneira uniforme.
- Sulcos mais profundos e largos aumentam a quilometragem e permitem múltiplos recapamentos.

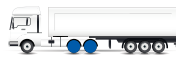


Size	PR	Load Index	Speed Symbol	Tread Depth			
				mm			
425/65R22.5	20	165	K	18.0	C	B	75dB/B
445/65R22.5	20	169	K	16.5	C	B	72dB/A

Regrooving Guidelines



Size	D: Regrooving Depth	W: Regrooving Width
	mm	mm
425/65R22.5	2.5	7.0 - 8.0
445/65R22.5	2.5	7.0 - 8.0



M+S



OH - 311

Drive-axle tyre for regional applications.

OH - 311



#English

- a) Creative design of five-lug pattern built for firm grip and cornering ability.
- b) Open shoulder design that ensures quicker evacuation of water delivering good road grip.
- c) Deeper and wider grooves increase mileage and enhances service life.



#Spanish • Transmisión en largo recorrido y regional

- a) Creativos Design des 5-Lug-Musters für festen Griff und Kurvenfahrt.
- b) Offene Schulterkonstruktion, die eine schnellere Evakuierung von Wasser gewährleistet und einen guten Straßengriff bietet.
- c) Tiefere und breitere Rillen erhöhen die Kilometerleistung und erhöhen die Lebensdauer.



#Portuguese • Pneu para eixo de tração em aplicações regionais

- a) Design criativo de padrão de 5 Lugs construído para aderência firme e capacidade de curvar.
- b) Design de ombro aberto que assegura evacuação mais rápida da água, proporcionando boa aderência na estrada.
- c) Sulcos mais profundos e largos aumentam a quilometragem e aprimoram a vida útil do pneu.



Size	PR	Load Index	Speed Symbol	Tread Depth			
				mm			
9.5R17.5	14	129/127	L	14.0	E	C	70dB/A
9.5R17.5	18	143/141	J	14.0	E	C	70dB/A
215/75R17.5	14	128/126	M	13.0	E	C	70dB/A
215/75R17.5	16	135/133	K	13.0	E	C	70dB/A
225/75R17.5	12	129/127	M	15.0	E	C	70dB/A
235/75R17.5	14	132/130	M	13.5	E	C	70dB/A
235/75R17.5	18	143/141	J	13.5	E	C	70dB/A

Regrooving Guidelines



Size	D: Regrooving Depth	W: Regrooving Width
	mm	mm
9.5R17.5	2.5	7.0 - 8.0
215/75R17.5	2.5	7.0 - 8.0
225/75R17.5	2.5	7.0 - 8.0
235/75R17.5	2.5	7.0 - 8.0



M+S POR

OH - 312

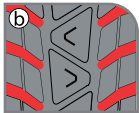
Drive-axle tyre for off-road applications.

OH - 312



#English

- a) Aggressive tread pattern that delivers outstanding traction in tough conditions with deeper and wider grooves that increase mileage and enhance service life.
- b) Large lugs, cut-and chip-resistance compound withstand severe conditions in gravel / construction usage.
- c) Open shoulder design that ensures quicker evacuation of water delivering good road grip.



#Spanish • Neumático de tracción fuera de carretera

- a) Dibujo de banda de rodamiento agresivo que ofrece una tracción inmejorable en condiciones adversas.
- b) Agarraderas grandes y resistente a los cortes y al desconchado soportando condiciones severas en gravilla y construcciones.
- c) Diseño de hombro abierto que asegura una evacuación de agua más rápida para un mayor agarre en carretera.



#Portuguese • Pneu para eixo de tração em aplicações off-road

- a) Padrão de banda de rodagem agressivo que oferece tração excepcional em condições difíceis, com sulcos mais profundos e largos que aumentam a quilometragem e aprimoram a vida útil.
- b) Tacos grandes, composto resistente a cortes e chips resistem a condições severas em cascalho/construção.
- c) Design de ombro aberto que assegura evacuação mais rápida da água, proporcionando boa aderência na estrada.



Size	PR	Load Index	Speed Symbol	Tread Depth	
				mm	
11R22.5	16	148/145	K	22.0	Not Applicable for POR Category
12R22.5	18	152/149	K	23.0	
295/80R22.5	16	152/148	K	22.0	

Regrooving Guidelines



Size	D: Regrooving Depth	W: Regrooving Width
	mm	mm
11R22.5	2.5	7.0 - 8.0
12R22.5	2.5	7.0 - 8.0
295/80R22.5	2.5	7.0 - 8.0



OH - 312+

Drive-axle tyre for off-road applications.

OH - 312+



#English

- a) Aggressive tread pattern that delivers outstanding traction in tough conditions with deeper and wider grooves that increase mileage and enhance service life.
- b) Large lugs, cut-and chip-resistance compound withstand severe conditions in gravel / construction usage.
- c) Open shoulder design that ensures quicker evacuation of water delivering good road grip specially designed sipe on tread blocks ensure snow performance.



#Spanish • Neumático de tracción fuera de carretera

- a) Agresivo patrón de rodadura que proporciona una excelente tracción en condiciones extremas, con los surcos anchos y profundos que incrementan kilometraje y alargan la vida útil del neumático.
- b) Compuesto resistente a arrastres y arrancamientos, resistente a condiciones severas para uso fuera de la carretera.
- c) Diseño del hombro abierto que asegura una rápida evacuación del agua, facilitando una buena adherencia a la carretera, incluso sobre nieve.



#Portuguese • Pneu para eixo de tração em aplicações off-road

- a) Padrão de banda de rodagem agressivo que oferece tração excepcional em condições difíceis, com sulcos mais profundos e largos que aumentam a quilometragem e aprimoram a vida útil.
- b) Tacos grandes, composto resistente a cortes e chips resistem a condições severas em cascalho/construção.
- c) Design de ombro aberto que assegura evacuação mais rápida da água, proporcionando boa aderência na estrada; as lamelas especialmente projetadas nos blocos de banda de rodagem garantem desempenho na neve.

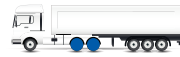


Size	PR	Load Index	Speed Symbol	Tread Depth	E	A	A B C
				mm			
13R22.5	18	156/150	K	22.5	E	A	75dB/B
315/80R22.5	20	156/150	K	22.5	D	A	75dB/B

Regrooving Guidelines



Size	D: Regrooving Depth	W: Regrooving Width
	mm	mm
13R22.5	2.5	7.0 - 8.0
315/80R22.5	2.5	7.0 - 8.0



M+S



OH - 319

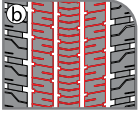
Drive-axle tyre for long haul applications.

OH - 319



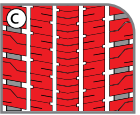
#English

- a) Closed shoulder with shallow lateral grooves offers excellent resistance against irregular wear.
- b) Five-rib pattern and wider rolling tread delivers longer mileage.
- c) Optimized pattern design for lower noise.



#Spanish • Transmisión largo recorrido

- a) Hombro cerrado con ranuras superficiales laterales que ofrecen una resistencia excelente contra el desgaste irregular.
- b) Dibujo de 5 costillas y una banda de rodamiento más ancha ofreciendo un mayor kilometraje.
- c) Diseño optimizado para un menor ruido.



#Portuguese • Pneu para eixo de tração em aplicações de longa distância

- a) Ombro fechado com sulcos laterais rasos oferecem excelente resistência contra desgaste irregular.
- b) Padrão de 5 nervuras e banda de rodagem mais larga proporcionam maior quilometragem.
- c) Design otimizado para menor ruído.

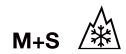
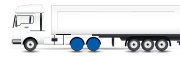


Size	PR	Load Index	Speed Symbol	Tread Depth			
				mm			
315/70R22.5	16	154/150	L	16.5	C	C	74dB/B
315/80R22.5	20	156/150	L	16.5	C	C	74dB/B

Regrooving Guidelines



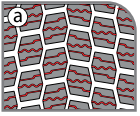
Size	D: Regrooving Depth	W: Regrooving Width
	mm	mm
315/70R22.5	2.5	7.0 - 8.0
315/80R22.5	2.5	7.0 - 8.0



OH - 320

Drive-axle tyre for regional applications.

OH - 320



#English

- a) Unique sipes on all tread blocks enhance wet grip and snow grip performance.
- b) Optimized block design resists irregular wear (Heel and Toe wear).
- c) Zigzag grooves offer excellent traction on all road conditions.



#Spanish • Transmisión uso regional

- a) Laminillas únicas en todos los bloques de la banda de rodamiento que mejoran el agarre en superficies húmedas y de nieve.
- b) Diseño de bloque optimizado que resiste el desgaste irregular.
- c) Ranuras en zigzag que ofrecen una tracción excelente en todo tipo de carreteras.



#Portuguese • Pneu para eixo de tração em aplicações regionais

- a) Sipes únicas em todos os blocos de banda de rodagem aprimoram o desempenho em condições de umidade e neve.
- b) Design de blocos otimizado resiste ao desgaste irregular (desgaste de calcanhar e ponta).
- c) Sulcos em zigue-zague oferecem excelente tração em todas as condições de estrada.

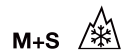
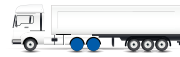


Size	PR	Load Index	Speed Symbol	Tread Depth			
				mm			
11R22.5	16	148/145	M	18.0	D	C	74dB/B
275/70R22.5	16	148/145	M	18.0	D	B	74dB/B
295/60R22.5	16	150/147	K	17.0	D	C	74dB/B
295/80R22.5	16	152/148	M	20.0	D	C	74dB/B
315/60R22.5	16	154/148	L	17.0	D	A	73dB/A
315/70R22.5	16	154/150	L	21.5	D	C	74dB/B
315/80R22.5	20	156/150	L	21.5	D	C	74dB/B



Regrooving Guidelines

Size	D: Regrooving Depth	W: Regrooving Width
	mm	mm
11R22.5	2.5	7.0 - 8.0
275/70R22.5	2.5	7.0 - 8.0
295/60R22.5	2.5	7.0 - 8.0
295/80R22.5	2.5	7.0 - 8.0
315/60R22.5	2.5	7.0 - 8.0
315/70R22.5	2.5	7.0 - 8.0
315/80R22.5	2.5	7.0 - 8.0



OH - 322

Drive-axle tyre for regional applications.

OH - 322



#English

- a) Unique block angle design prevents heel and toe wear and rigid shoulder ribs prevent block tearing.
- b) Wider tread width and stronger blocks provide enhanced stability, longer mileage, and better handling performance.
- c) Specially designed 3D sipes deliver reduced braking distance in dry, wet and snow conditions.



#Spanish • Neumático de eje motriz para uso regional

- a) El exclusivo diseño del ángulo del bloque evita el desgaste del talón y la puntera, y las nervaduras rígidas del hombro también evitan el desgaste de dichos bloques.
- b) La mayor anchura de la banda de rodadura y los bloques más resistentes proporcionan mayor estabilidad, mayor kilometraje y mejor maniobrabilidad.
- c) Las laminillas 3D especialmente diseñadas reducen la distancia de frenado en seco, mojado y nieve.

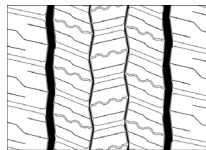


#Portuguese • Pneu para eixo de tração em aplicações regionais

- a) Design exclusivo do ângulo dos blocos previne desgaste de calcanhar e ponta, e costelas rígidas nos ombros evitam rasgamento dos blocos.
- b) Largura de banda de rodagem mais ampla e blocos mais fortes proporcionam estabilidade aprimorada, maior quilometragem e melhor desempenho de manuseio.
- c) Sipes 3D especialmente projetadas proporcionam redução na distância de frenagem em condições secas, molhadas e de neve.



Size	PR	Load Index	Speed Symbol	Tread Depth			
				mm			
205/75R17.5	12	124/122	M	13.5	C	B	74dB/B
245/70R17.5	16	136/134	M	13.5	C	B	74dB/B
245/70R19.5	16	136/134	M	14.5	C	B	74dB/B
265/70R19.5	16	140/138	M	14.5	C	B	74dB/B
285/70R19.5	16	146/144	M	14.5	C	B	74dB/B
305/70R19.5	18	148/145	M	14.5	C	B	74dB/B



Regrooving Guidelines

Size	D: Regrooving Depth	W: Regrooving Width
	mm	mm
205/75R17.5	2.5	6.0 - 7.0
245/70R17.5	2.5	7.0 - 8.0
245/70R19.5	2.5	7.0 - 8.0
265/70R19.5	2.5	7.0 - 8.0
285/70R19.5	2.5	7.0 - 8.0
305/70R19.5	2.5	8.0 - 9.0



M+S



POR

OH - 402

Drive-axle tyre for off-road applications.

OH - 402



#English

- a) Open shoulder design that ensures quicker evacuation of water delivering good road grip.
- b) Uniform block pattern with wider tread design maximizes surface contact, withstands heavy load, and prevents uneven wear.
- c) Presence of stone ejectors avoids retention of stones.



#Spanish • Eje de dirección para uso todoterreno

- a) Diseño de hombro abierto que mejora la disipación del calor y evacua el agua rápidamente.
- b) Dibujo de bloque uniforme con un diseño de banda de rodamiento más ancha que maximiza el contacto con la superficie, resiste carga pesada y previene el desgaste uniforme.
- c) Presencia de eyectores de piedra que evitan las retenciones de piedras.

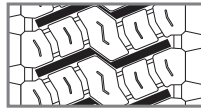


#Portuguese • Pneu para eixo de tração em aplicações off-road.

- a) Design de ombro aberto que assegura evacuação mais rápida da água, proporcionando boa aderência na estrada.
- b) Padrão uniforme de blocos com design de banda de rodagem mais larga maximiza o contato com a superfície, suporta carga pesada e evita desgaste irregular.
- c) Presença de ejetores de pedras evita a retenção de pedras.



Size	PR	Load Index	Speed Symbol	Tread Depth		
				mm		
315/80R22.5	20	156/150	K	21.5	Not Applicable for POR Category	



Regrooving Guidelines

Size	D: regrooving Depth	W: Regrooving Width
	mm	mm
315/80R22.5	2.5	7.0 - 8.0

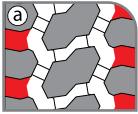


M+S POR

OH - 403

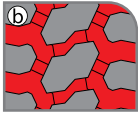
Drive-tyre for off-road applications.

OH - 403



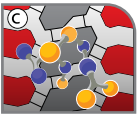
#English

- a) Open shoulder design that ensures quicker evacuation of water delivering good road grip.
- b) Extra deep tread that enhances original mileage and delivers superior traction.
- c) Large lugs, cut-and chip-resistance compound withstands severe conditions in gravel / construction usage.



#Spanish • Neumático de tracción fuera de carretera

- a) Diseño del hombro abierto que aseguran una rápida evacuación del agua, proporcionando un mejor agarre.
- b) La banda de rodadura más ancha alarga el kilometraje y ofrece una mejor tracción.
- c) Compuesto resistente a arrastres y arrancamientos, resistente a condiciones severas para uso fuera de la carretera.

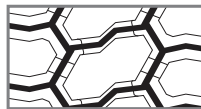


#Portuguese • Pneu para eixo de tração em aplicações off-road.

- a) Design de ombro aberto que assegura evacuação mais rápida da água, proporcionando boa aderência na estrada.
- b) Banda de rodagem extra profunda que aprimora a quilometragem original e oferece tração superior.
- c) Tacos grandes, composto resistente a cortes e chips resistem a condições severas em cascalho/construção.



Size	PR	Load Index	Speed Symbol	Tread Depth	
				mm	
12.00R20	20	156/153	G	24.0	Not Applicable for POR Category
11R22.5	16	146/143	G	24.5	
12R22.5	18	154/150	G	24.0	
13R22.5	18	156/150	G	25.5	
11R24.5	16	149/146	G	24.5	



Regrooving Guidelines

Size	D: regrooving Depth	W: Regrooving Width
	mm	mm
12.00R20	2.5	8.0 - 9.0
11R22.5	2.5	8.0 - 9.0
12R22.5	2.5	8.0 - 9.0
13R22.5	2.5	8.0 - 9.0
11R24.5	2.5	8.0 - 9.0



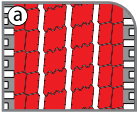
M+S



OH - 501

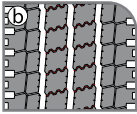
Traction tyre with 'All-Position' capability for urban applications, with kerb protection.

OH - 501



#English

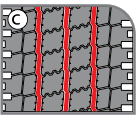
- a) Four-wide ribs increase rolling tread width ensuring longer mileage.
- b) Full depth sipes in two center ribs for excellent traction and braking.
- c) Zigzag grooves deliver excellent steering performance.



#Spanish

• Todas posiciones para uso urbano

- a) 4 hombres de larga extensión, que aumentan la banda de rodadura asegurando un kilometraje más largo.
- b) Profundas ranuras en 2 nervaduras centrales para una excelente tracción y frenada.
- c) Surcos en zigzag que proporcionan una excelente conducción.



#Portuguese

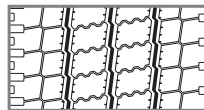
• Pneu de tração com capacidade "All Position" para aplicações urbanas, com proteção de meio-fio.

- a) 4 nervuras largas aumentam a largura de contato da banda de rodagem, garantindo maior quilometragem.
- b) Sulcos completos nas 2 nervuras centrais para excelente tração e frenagem.
- c) Sulcos em zigue-zague proporcionam excelente desempenho de direção.



Size	PR	Load Index	Speed Symbol	Tread Depth			
				mm			
275/70R22.5	18	152/149	J	17.0	C	C	75dB/B

Regrooving Guidelines



Size	D: Regrooving Depth	W: Regrooving Width
	mm	mm
275/70R22.5	2.5	7.0 - 8.0



eu.otanityre.com

