



OTANI[®]

DRIVING CONFIDENCE

MADE IN THAILAND



**2026 EUROPE PCLT
PATTERN DIGEST**



EK1000

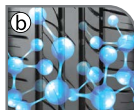
For Passenger Cars

EK1000



#English

- Asymmetrical tread design that offers remarkable grip in both dry and wet conditions.
- Special tread compound that delivers unmatched driving comfort performance at high speed.
- Low noise groove design enables it to be a silent performer.






#Spanish • Para turismos

- Diseño asimétrico de la banda de rodadura que ofrece un agarre extraordinario tanto en seco como en mojado.
- Compuesto especial de la banda de rodadura que proporciona un confort de conducción inigualable a alta velocidad.
- Diseño de ranura de bajo ruido que permite un rendimiento silencioso.



#Portuguese • Para Carros de Passageiros

- Design de piso assimétrico que oferece aderência notável em condições secas e molhadas.
- Composto de piso especial que proporciona um conforto de condução incomparável em alta velocidade.
- O Design de Sulco de Baixo Ruído permite que seja um executante silencioso.

Series	Size	Load & Speed Index	Maximum Load	Max. Inflation Pressure	Rim Width	Section Width	Overall Diameter	Tread Depth			
			kgs	psi	inches	mm	mm	mm			
70	145/70R13	71T	345	44	4.5	148	534	7.6	D	D	67dB/A
	175/70R13*	82T	475	44	5.0	182	574	7.3	D	C	67dB/A
	175/70R14	84V	500	44	5.5	181	602	7.4	D	C	67dB/A
	185/70R14	88H	560	44	5.5	193	614	7.1	D	C	70dB/B
	195/70R14	91H	615	44	6.0	203	627	7.1	D	B	71dB/B
	205/70R15	96V	710	44	6.0	212	667	7.5	D	B	71dB/B
65	215/70R15	98V	750	44	6.5	223	681	7.5	D	B	71dB/B
	165/65R14	79T	437	44	5.0	170	567	7.1	D	C	67dB/A
	175/65R14	86V XL	530	50	5.0	179	584	7.5	D	C	67dB/A
	185/65R14	86V	530	44	5.5	190	595	7.6	D	C	70dB/B
	175/65R15	84V	500	44	5.5	177	610	7.4	D	C	67dB/A
	185/65R15	88V	560	44	5.5	189	621	7.5	D	C	70dB/B
	195/65R15	91H	615	44	6.0	201	635	7.4	D	B	71dB/B
	205/65R15	94V	670	44	6.0	210	646	7.5	D	B	71dB/B
	195/65R16	92V	630	44	6.0	200	663	7.4	D	B	71dB/B
	215/65R16	98V	750	44	6.5	224	683	7.7	D	B	71dB/B
	225/65R16	100V	800	44	6.5	228	695	7.6	C	B	71dB/B
	235/65R16	103V	875	44	7.0	241	708	7.7	C	B	71dB/B
	215/65R17	99H	775	44	6.5	223	714	7.6	D	B	71dB/B
	60	175/60R13	77V	412	44	5.0	175	540	7.6	D	C
165/60R14		75H	387	44	5.5	174	555	7.4	D	D	67dB/A
185/60R14		82H	475	44	5.5	188	575	7.1	D	C	70dB/B
185/60R15		84H	500	44	5.5	189	603	7.5	D	C	70dB/B
195/60R15		88V	560	44	6.0	199	615	7.5	D	B	71dB/B
225/60R16		98H	750	44	6.5	225	673	7.6	D	B	71dB/B
225/60R17		99V	775	44	6.5	226	705	7.7	C	B	71dB/B
225/60R18		100H	800	44	6.5	233	725	7.9	C	B	71dB/B
55	185/55R15	82V	475	44	6.0	192	585	7.4	D	C	70dB/B
	195/55R15	85V	515	44	6.0	200	594	7.4	D	B	71dB/B
	185/55R16	83V	487	44	6.0	190	613	7.7	D	C	70dB/B
50	195/50R15	82V	475	44	6.0	196	579	7.4	D	B	71dB/B
	195/50R16	84V	500	44	6.0	192	608	7.5	D	B	71dB/B

* Available in BSW & WSW sidewall styles



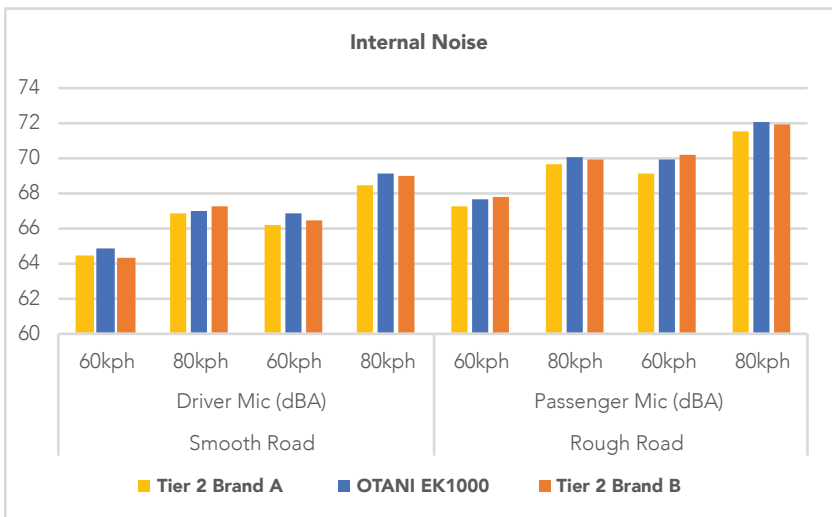
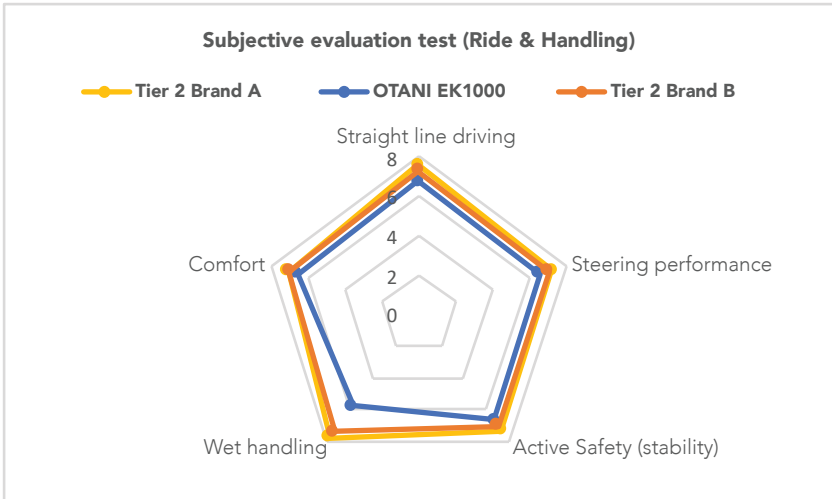
EK1000

For Passenger Cars

Upcoming size

Series	Size	Load & Speed Index
65	165/65 R13	77T

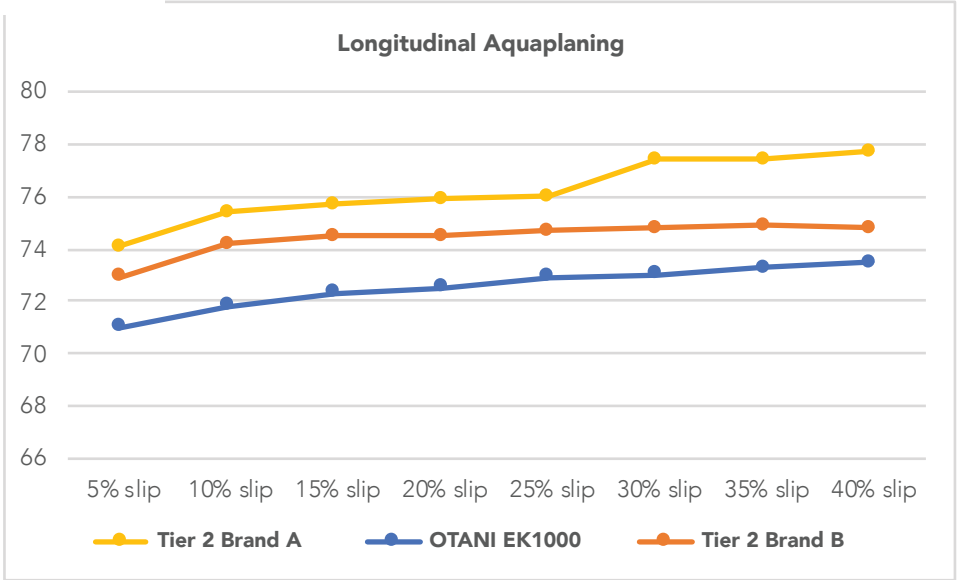
Test Results





EK1000

For Passenger Cars



EK2000

For Passenger Cars

EK2000



#English

- Efficient tread design for water evacuation, braking distance and improved wet handling performance.
- Various tread patterns reduce noise, making driving comfortable and smooth.
- The improved tread formula enhances durability, traction, and fuel efficiency.

#Spanish • Para turismo

- Diseño eficiente de la banda de rodadura para la evacuación del agua, la distancia de frenado y un mejor rendimiento sobre mojado.
- Los dibujos de la banda de rodadura reducen el ruido. hacen que la conducción sea cómoda y suave.
- La fórmula mejorada de la banda de rodadura contribuye a prolongar la vida útil, la tracción y el ahorro de combustible.

#Portuguese • Para Carros de Passageiros

- Design de piso eficiente para evacuação de água, distância de travagem e desempenho melhorado em condições molhadas.
- Vários padrões de piso reduzem o ruído, tornando a condução confortável e suave.
- Fórmula de piso melhorada eficientemente contribui para uma vida útil mais longa, tração e eficiência de combustível.

Series	Size	Load & Speed Index	Maximum Load	Max. Inflation Pressure	Rim Width	Section Width	Overall Diameter	Tread Depth			
			kgs	psi	inches	mm	mm	mm			
70	205/70R15	96H	710	44	6.0	212	667	7.5	D	C	71dB/B
	215/70R15	98H	750	44	6.5	223	681	7.5	D	C	71dB/B
65	185/65R14	86H	530	44	5.5	190	595	7.7	D	C	70dB/B
	185/65R15	88H	560	44	5.5	189	621	7.5	D	C	70dB/B
	195/65R15	91H	615	44	6.0	201	635	7.4	D	C	71dB/B
	205/65R15	94H	670	44	6.0	210	646	7.5	D	C	71dB/B
	205/65R16	95H	690	44	6.0	205	670	7.6	D	C	71dB/B
60	195/60R15	88H	560	44	6.0	199	615	7.5	D	C	71dB/B
	205/60R16	92H	630	44	6.0	205	653	7.7	D	C	71dB/B
	215/60R16	95H	690	44	6.5	223	668	7.8	D	C	71dB/B
	225/60R16	98H	750	44	6.5	225	673	7.6	D	C	71dB/B
55	205/55R16	91H	615	44	6.5	211	635	7.5	D	C	71dB/B
	215/55R16	93H	650	44	7.0	226	642	7.8	D	C	71dB/B

NEW

EK3000

For Passenger Cars

EK3000



#English

- a) Asymmetric tread design enhances vehicle control on both wet and dry roads, increasing driver confidence and safety. It also supports improved fuel efficiency and reduced CO₂ emissions, making it a smarter, more eco-conscious choice.
- b) Advanced pitch arrangement and sound-dampening sipes engineered to significantly reduce road noise, delivering a quieter and more comfortable driving experience.
- c) Optimized circumferential and lateral grooves ensure superior protection against aquaplaning and promote even pressure distribution across the tread surface for consistent performance and extended tyre life.

#Spanish

- a) Diseño de banda de rodadura asimétrica Mejora el control del vehículo tanto en carreteras mojadas como secas, lo que hace aumentar la seguridad y la confianza del conductor. Además, contribuye a una mayor eficacia de combustible y a la reducción de las emisiones de CO₂, convirtiéndolo en una opción más inteligente y respetuosa con el medio ambiente.
- b) Disposición avanzada de tacos y laminillas que absorben el sonido Diseñadas para reducir de forma significativa el ruido de la carretera, ofreciendo así una experiencia de conducción más silenciosa y cómoda.
- c) Ranuras circunferenciales y laterales optimizadas Garantizan una protección excepcional contra el aquaplaning y favorecen una distribución uniforme de la presión sobre la superficie de la banda de rodadura, para ofrecer un rendimiento constante y una mayor durabilidad del neumático.

#Portuguese

- a) Design assimétrico do piso Melhora o controle do veículo em estradas molhadas e secas, aumentando a confiança e a segurança do condutor. Contribui ainda para uma maior eficiência de combustível e para a redução das emissões de CO₂; tornando-se uma escolha mais inteligente e ambientalmente responsável.
- b) Disposição avançada dos blocos e lamelas de absorção sonora Concebidas para reduzir significativamente o ruído da estrada, proporcionando uma experiência de condução mais silenciosa e confortável.
- c) Sulcos circunferenciais e laterais otimizados Garantem uma proteção superior contra a aquaplanagem e promovem uma distribuição uniforme da pressão ao longo da superfície do piso, para um desempenho consistente e maior durabilidade do pneu.

Series	Size	Load & Speed Index	Maximum Load	Max. Inflation Pressure	Rim Width	Section Width	Overall Diameter	Tread Depth			
			kgs	psi	inches	mm	mm	mm			
65	195/65R15	91V	615	44	6.0	200	634	7.6	C	B	69dB/A
	205/65R15	94V	670	44	6.0	207	646	7.3	C	A	71dB/B
	215/65R16	98V	750	44	6.5	219	685	7.3	C	A	71dB/B
60	195/60R15	88V	560	44	6.0	201	615	7.6	C	B	69dB/A
	195/60R16	89V	580	44	6.0	202	640	7.4	C	B	69dB/A
	215/60R16	99V XL	775	50	6.5	221	664	7.5	C	A	72dB/B
	215/60ZR17	100W XL	800	50	6.5	220	691	7.5	C	A	72dB/B
	225/60R17	99V	775	44	6.5	227	703	7.3	C	A	71dB/B
	225/60R18	100H	800	44	6.5	226	729	7.7	C	A	71dB/B
55	235/60R18	103H	875	44	7.0	240	740	7.7	C	A	71dB/B
	195/55R15	85V	515	44	6.0	199	593	7.6	D	B	69dB/A
	195/55R16	87V	545	44	6.0	198	617	7.4	C	B	69dB/A
	205/55ZR17	95W XL	690	50	6.5	211	659	7.6	C	A	72dB/B
	215/55ZR17	98W XL	750	50	7.0	226	668	7.5	C	A	72dB/B
	195/55R18	93H XL	650	50	6.0	196	674	7.7	C	B	72dB/B
	215/55R18	99V XL	775	50	7.0	224	694	7.6	C	A	72dB/B
	225/55ZR18	102Y XL	850	50	7.0	231	709	7.4	C	A	72dB/B
	225/55R19	99V	775	44	7.0	231	733	7.5	C	A	71dB/B
	235/55ZR19	101W	825	44	7.5	244	742	7.4	C	A	71dB/B
	50	195/50R15	82V	475	44	6.0	199	577	7.7	D	B
195/50R16		88V XL	560	50	6.0	198	604	7.9	C	B	69dB/A
205/50ZR17		93W XL	650	50	6.5	210	640	7.6	C	A	72dB/B
215/50ZR17		95W XL	690	50	7.0	223	650	7.7	C	A	72dB/B
225/50ZR17		98W XL	750	50	7.0	230	657	7.6	C	A	72dB/B
225/50ZR18		99W XL	775	50	7.0	231	684	7.6	C	A	72dB/B
235/50ZR18		101W XL	825	50	7.5	245	695	7.6	C	A	72dB/B
45	205/45ZR16	87W XL	545	50	7.0	204	588	7.3	C	A	72dB/B
	215/45R16	90V XL	600	50	7.0	210	601	7.4	C	A	72dB/B
40	245/40ZR17	95Y XL	690	50	8.5	245	630	7.4	C	A	72dB/B
	235/40ZR18	95W XL	690	50	8.5	238	647	7.3	C	A	72dB/B

Upcoming sizes

Series	Size	Load & Speed Index
65	165/65R14	79T
	205/65R16	95V
60	205/60R16	92V

KC1000

For Premium High-performance and Luxury Vehicles

KC1000



#English

- a) Optimized tread pattern design with "noise reduction" bars and multi-pitches provides a quiet driving experience.
- b) Rigid outer side tread with new longitudinal groove design offers enhanced steering control on both wet and dry roads and for enhanced comfort.
- c) New sidewall construction and improved tread compound ensure excellent grip and fuel saving.



#Spanish • Para vehículos premium de altas prestaciones y de lujo

- a) El diseño optimizado del dibujo de la banda de rodadura con barras de "reducción de ruido" y multi-pitch proporciona una experiencia de conducción silenciosa.
- b) La banda de rodadura exterior rígida con un nuevo diseño de surcos longitudinales ofrece un mayor control de la dirección tanto en carreteras mojadas como secas, además de una conducción cómoda.
- c) La nueva construcción de los flancos y el compuesto mejorado de la banda de rodadura garantizan un excelente agarre y ahorro de combustible.



#Portuguese • Para Veículos de Luxo e de Alto Desempenho

- a) Design otimizado do padrão do piso com "redução de ruído" barras e múltiplos passos fornecem experiência de condução silenciosa.
- b) Piso lateral externo rígido com novas ranhuras longitudinais design oferece melhorado controle de direção tanto em estradas molhadas como em estradas secas e condução confortável.
- c) Nova construção da parede lateral e composto de piso melhorado asseguram excelente aderência e economia de combustível.

Series	Size	Load & Speed Index	Maximum Load	Max. Inflation Pressure	Rim Width	Section Width	Overall Diameter	Tread Depth		kgs	psi	inches	mm	mm	mm	mm	ABC
			65	185/65R15	88V	560	44	5.0									
60	185/60R15	84V	500	44	5.5	186	603	8.0	C	C	69dB/B						
	195/60R15	88V	560	44	6.0	198	617	8.3	C	C	69dB/B						
	195/55R15	85W	515	44	6.0	198	597	7.8	C	C	69dB/B						
55	205/55ZR16	94W XL	670	50	6.5	210	631	7.5	C	B	69dB/A						
	205/55ZR17	91Y	615	44	6.5	210	663	7.8	C	A	69dB/A						
	215/55ZR17	98W XL	750	50	7.0	225	671	7.3	C	A	69dB/A						
	225/55ZR17	101W XL	825	50	7.0	227	685	7.4	B	A	69dB/A						
	235/55ZR18	104W XL	900	50	7.0	240	716	7.4	B	A	69dB/A						
	195/50R15	82W	475	44	6.0	194	579	7.7	C	C	69dB/B						
50	215/50ZR17	95W XL	690	50	7.0	218	651	7.7	C	A	69dB/A						
	225/50ZR17	98W XL	750	50	7.0	226	660	7.8	B	A	69dB/A						
	245/50ZR19	105W XL	925	50	7.5	248	732	7.2	B	A	72dB/B						
45	205/45ZR17	88Y XL	560	50	7.0	205	620	7.3	C	A	69dB/A						
	215/45ZR17	91Y XL	615	50	7.0	210	631	7.5	C	A	69dB/A						
	225/45ZR18	95Y XL	690	50	7.5	222	664	7.4	B	A	69dB/A						
	235/45ZR18	98W XL	750	50	8.0	234	672	7.3	B	A	69dB/A						
	245/45ZR18	100Y XL	800	50	8.0	238	678	7.5	B	A	72dB/B						
	225/45ZR19	96Y XL	710	50	7.5	221	692	7.5	B	A	69dB/A						
	245/45ZR20	103W XL	875	50	8.0	240	727	7.3	B	A	72dB/B						
	255/45ZR20	105Y XL	925	50	8.5	252	739	7.5	B	A	73dB/B						
40	255/40ZR18	99W XL	775	50	8.5	255	664	7.1	B	A	73dB/B						
	275/40ZR18	103Y XL	875	50	9.5	227	678	7.5	B	A	73dB/B						
	225/40ZR19	93Y XL	650	50	8.0	224	672	7.4	C	A	69dB/A						
	245/40ZR19	98Y XL	750	50	8.0	239	685	7.4	B	A	72dB/B						
	245/40ZR20	99Y XL	775	50	8.5	243	707	7.1	B	A	72dB/B						
	275/40ZR20	106W XL	950	50	9.0	274	734	7.7	B	A	73dB/B						
	265/40ZR22	106Y XL	950	50	9.5	267	775	7.4	B	A	73dB/B						
	235/35ZR19	91Y XL	615	50	8.0	237	651	7.4	C	A	69dB/A						
35	245/35ZR19	93W XL	650	50	8.0	241	664	7.6	B	A	72dB/B						
	255/35ZR19	96Y XL	710	50	9.0	254	666	7.8	B	A	73dB/B						
	275/35ZR19	100Y XL	800	50	9.5	270	674	7.5	B	A	73dB/B						
	315/35ZR20	110Y XL	1060	50	11.0	313	728	7.3	B	A	74dB/B						



KC1000

For Premium High-performance and Luxury Vehicles

Upcoming sizes

Series	Size	Load & Speed Index
60	235/60R18	107V XL
	225/55ZR18	102W XL
55	235/55ZR19	105W XL
	235/50R19	103V XL
50	255/50R19	107V XL
	275/50R20	113V XL
	225/45ZR17	94Y XL
45	215/45ZR18	93Y XL
	245/45ZR19	102W XL
	255/45ZR19	104W XL
	275/45ZR20	110W XL
	275/45ZR21	110W XL
	285/45ZR21	113W XL
40	225/40ZR18	92W XL
	245/40ZR18	97W XL
	285/40ZR19	107W XL
	255/40ZR20	101W XL
	265/40ZR20	104W XL
	285/40ZR20	108W XL
	305/40ZR20	112W XL
	255/40ZR21	102W XL
	265/40ZR21	105W XL
	275/40ZR21	107W XL
	315/40ZR21	115W XL
	275/40ZR22	107W XL
35	245/35ZR20	95W XL
	275/35ZR20	102W XL
	285/35ZR20	104W XL
	295/35ZR20	105W XL
	285/35ZR21	105W XL
	315/35ZR21	111W XL
	275/35ZR22	104W XL
	315/35ZR22	111W XL
30	275/30ZR20	97W XL
	285/30ZR20	99W XL
	315/30ZR22	107W XL

KC2000

For High-performance and Luxury Vehicles

KC2000



#English

- Sporty asymmetrical tread design that provides unparalleled stability for high performance cars.
- The unique tread compound delivers shorter braking distances and improved fuel efficiency.
- Serrations on groove walls reduce pipe-resonance noise, making it an extremely silent tyre.



#Spanish • Para vehículos premium de altas prestaciones y de lujo

- Diseño deportivo y asimétrico de la banda de rodadura que proporciona una increíble estabilidad para coches de altas prestaciones.
- Compuesto exclusivo de la banda de rodadura que proporciona una menor distancia de frenado y una mayor eficiencia de combustible.
- Las estrías en las paredes de los surcos reducen el ruido del tubo, lo que lo convierte en un neumático extremadamente silencioso.



#Portuguese • Para Veículos de Luxo e de Alto Desempenho

- Design assimétrico desportivo do piso que proporciona estabilidade incomparável para carros de alto desempenho.
- Composto de piso único que oferece menor distância de travagem e maior economia de combustível.
- Serrilhas nas paredes das ranhuras reduzem a ressonância de tubo ruído, tornando-o um pneu extremamente silencioso.

Series	Size	Load & Speed Index	Maximum Load	Max. Inflation Pressure	Rim Width	Section Width	Overall Diameter	Tread Depth			
			kgs	psi	inches	mm	mm	mm			
60	205/60R14	88H	560	44	5.5	207	599	8.0	D	B	68dB/A
	205/60R15	91V	615	44	6.0	206	627	7.4	D	B	68dB/A
	205/60R16	92V	630	44	6.0	205	653	7.7	D	B	68dB/A
	215/60R16	99V XL	775	50	6.5	223	668	7.8	D	B	71dB/B
55	205/55ZR16	91V	615	44	6.5	210	631	7.5	D	B	68dB/A
	215/55ZR16	97W XL	730	50	7.0	226	639	7.2	D	B	71dB/B
	225/55ZR16	99Y XL	775	50	7.0	229	651	7.3	C	A	71dB/B
	215/55ZR17	98W XL	750	50	7.0	225	671	7.3	D	B	71dB/B
	225/55ZR17	101W XL	825	50	7.0	227	685	7.4	C	A	71dB/B
	235/55ZR17	103W XL	875	50	7.5	242	692	7.3	C	A	71dB/B
	235/55ZR18	104W XL	900	50	7.5	240	716	7.4	C	A	71dB/B
	225/55ZR19	99W	775	44	8.0	237	736	7.3	C	A	71dB/B
	235/55ZR19	105W XL	925	50	8.0	246	740	7.3	C	A	71dB/B
	245/55ZR19	103W	875	44	8.0	255	753	7.3	C	A	71dB/B
235/55ZR20	105W XL	925	50	8.0	250	766	7.3	C	A	71dB/B	
50	205/50ZR17	93Y XL	650	50	6.5	208	642	7.5	D	B	68dB/A
	215/50ZR17	95W XL	690	50	7.0	218	651	7.7	D	B	68dB/A
	225/50ZR17	98Y XL	750	50	7.0	226	660	7.8	C	A	71dB/B
	235/50ZR17	96W	710	44	7.5	240	671	7.3	C	A	71dB/B
	225/50ZR18	95W	690	44	7.0	225	685	7.3	C	A	71dB/B
	235/50ZR18	101W XL	825	50	7.5	241	698	7.4	C	A	71dB/B
235/50ZR19	103Y XL	875	50	8.0	240	724	7.3	C	A	71dB/B	
45	205/45ZR17	88Y XL	560	50	7.0	205	620	7.3	D	A	68dB/A
	215/45ZR17	91W XL	615	50	7.0	210	631	7.5	D	B	68dB/A
	225/45ZR17	94Y XL	670	50	7.5	222	638	7.5	D	A	71dB/B
	235/45ZR17	97Y XL	730	50	8.0	233	647	7.2	C	A	71dB/B
	245/45ZR17	99Y XL	775	50	8.0	240	650	7.3	C	A	71dB/B
	225/45ZR18	95Y XL	690	50	7.5	222	664	7.4	C	A	71dB/B
	235/45ZR18	98W XL	750	50	8.0	234	672	7.3	C	A	71dB/B
	245/45ZR18	100Y XL	800	50	8.0	238	678	7.5	C	A	71dB/B
	235/45ZR19	99W XL	775	50	8.0	231	697	7.3	C	A	71dB/B
	245/45ZR19	98Y	750	44	8.0	237	703	7.2	C	A	71dB/B
245/45ZR20	103W XL	875	50	8.0	240	727	7.3	C	A	71dB/B	

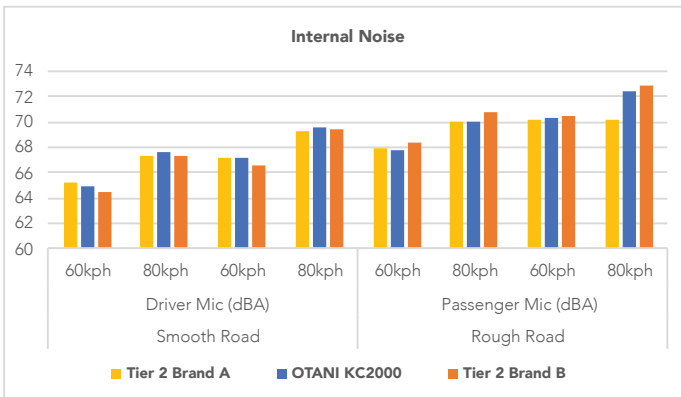
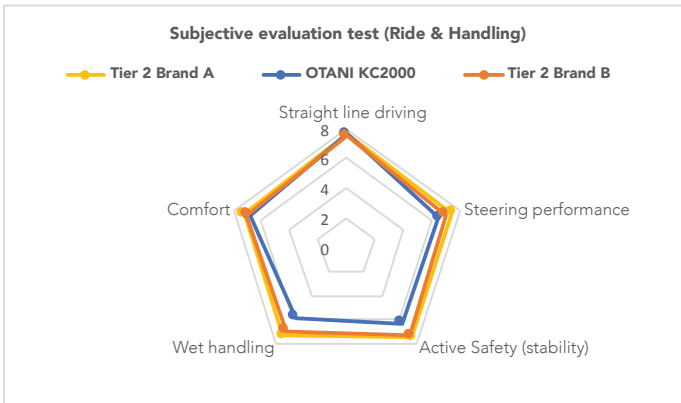


KC2000

For High-performance and Luxury Vehicles

Series	Size	Load & Speed Index	Maximum Load	Max. Inflation Pressure	Rim Width	Section Width	Overall Diameter	Tread Depth			
			kgs	psi	inches	mm	mm	mm			
45	285/45ZR22	114W XL	1180	50	9.5	285	814	8.1	C	A	72dB/A
	305/45ZR22	118W XL	1320	50	10.0	305	831	8.0	C	A	72dB/A
40	225/40ZR18	92Y XL	630	50	8.0	229	640	7.3	D	A	71dB/B
	245/40ZR18	97W XL	730	50	8.5	241	655	7.5	C	A	71dB/B
	235/40ZR19	96W XL	710	50	8.0	233	672	7.6	C	A	71dB/B
	275/40ZR19	105Y XL	925	50	9.5	275	706	7.4	C	A	72dB/B
	275/40ZR20	106W XL	950	50	9.5	274	734	7.7	C	A	72dB/B
	305/40ZR22	114W XL	1180	50	11.0	313	802	8.0	C	A	72dB/A
35	265/35ZR18	97W XL	730	50	9.5	268	642	7.2	C	A	72dB/B
	225/35ZR19	88Y XL	560	50	8.0	225	645	8.3	D	A	71dB/B
	255/35ZR19	96Y XL	710	50	9.5	254	666	7.8	C	A	72dB/B
	245/35ZR20	95Y XL	690	50	8.5	240	687	8.4	C	A	71dB/B
	265/35ZR22	102W XL	850	50	9.5	267	746	7.1	C	A	72dB/B
	305/35ZR24	112W XL	1120	50	11.0	308	824	8.0	C	A	74dB/B
30	285/30ZR19	98Y XL	750	50	10.0	283	659	7.2	C	A	72dB/A

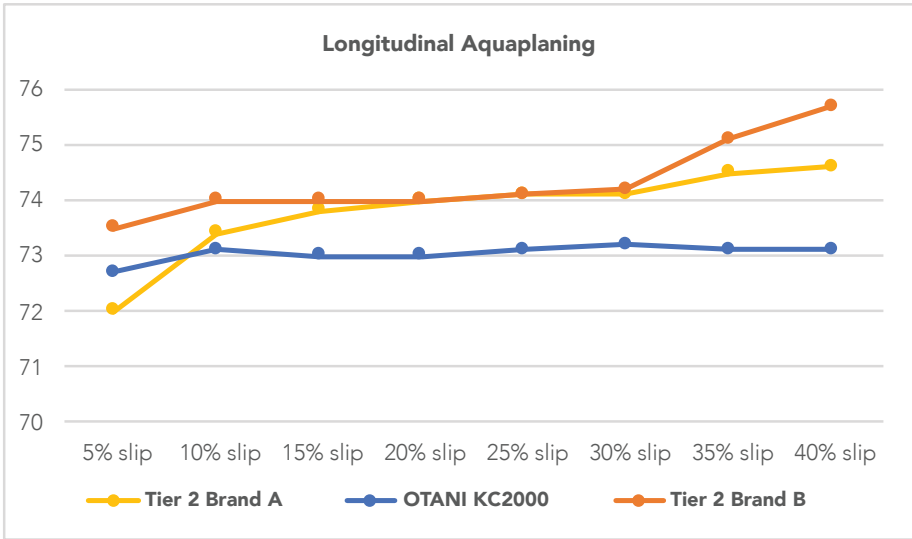
Test Results





KC2000

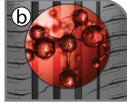
For High-performance and Luxury Vehicles



KN1000

For High-performance EVs

KN1000



#English

- An optimized tread pattern, special polyurethane foam, and low-hysteresis compounds ensure a comfortable and quiet driving experience.
- Innovative tread and sidewall compound offers excellent grip and handling performance, low energy consumption, and good durability due to its innovative tread compound, robust sidewall compound, and new bead design.
- Lower energy consumption, improved structure provides lower rolling resistance, reducing energy consumption and extending battery life.

#Spanish

- Para vehículos eléctricos de alto rendimiento
- El diseño optimizado de la banda de rodadura brinda una experiencia de conducción cómoda y silenciosa gracias a un patrón de banda de rodadura mejorado, espuma especial de poliuretano y compuestos de baja histéresis.
 - El compuesto innovador en la banda de rodadura y los flancos proporciona un agarre y desempeño en el manejo excepcionales; un bajo consumo de energía y una gran durabilidad gracias a su compuesto avanzado en la banda de rodadura, a su compuesto robusto en los flancos y a un nuevo diseño de talón.
 - Menor consumo de energía, la estructura mejorada disminuye la resistencia al rodaje, lo que reduce el consumo de energía y alarga la vida útil de la batería.

#Portuguese

- Para veículos elétricos de alto desempenho
- O padrão de banda de rodagem otimizado garante uma experiência de condução confortável e silenciosa, graças a um design de banda de rodagem aprimorado, espuma especial de poliuretano e compostos de menor histerese.
 - O composto inovador da banda de rodagem e da parede lateral oferece excelente aderência e desempenho em manuseio, baixo consumo de energia e boa durabilidade, graças ao composto avançado da banda de rodagem, ao composto robusto da parede lateral e ao novo design do talão.
 - Menor consumo de energia: a estrutura aprimorada proporciona menor resistência ao rolamento, reduzindo o consumo de energia e aumentando a vida útil da bateria.

Series	Size	Load & Speed Index	Maximum Load	Max. Inflation Pressure	Rim Width	Section Width	Overall Diameter	Tread Depth	
			kgs	psi	inches	mm	mm	mm	
65	275/65R18	116H XL	1250	50	8.0	278	813	6.6	B A 73dB/B
	195/60R16	93T XL	650	50	6.0	197	637	6.8	C C 72dB/B
	205/60R16	96V XL	710	50	6.0	209	651	6.8	C C 72dB/B
60	215/60R16	99V XL	775	50	6.0	222	661	6.6	C A 72dB/B
	225/60R18	104V XL	900	50	7.0	226	730	6.7	B A 72dB/B
	235/60R18	107V XL	975	50	7.0	237	740	6.7	B A 72dB/B
	275/60R20	116H XL	1250	50	8.0	269	836	6.7	B A 73dB/B
	185/55R16	87V XL	545	50	6.0	193	610	6.6	B C 71dB/B
55	215/55R17	98V XL	750	50	6.5	225	670	7.3	C A 72dB/B
	215/55R18	99V XL	775	50	7.0	224	692	6.7	C A 72dB/B
	225/55R19	103W XL	875	50	7.5	230	734	6.7	B A 72dB/B
	235/55R19	105V XL	925	50	7.5	240	740	6.7	B A 72dB/B
	205/50R17	93W XL	650	50	6.5	209	639	7.0	C C 72dB/B
50	215/50R17	95W XL	690	50	7.0	222	648	6.8	C A 72dB/B
	215/50R18	96V XL	710	50	7.0	222	673	6.7	B A 72dB/B
	225/50R18	99V XL	775	50	7.0	225	684	6.9	B A 72dB/B
	215/50R19	97V XL	730	50	7.0	220	700	6.8	C A 72dB/B
	235/50R19	103V XL	875	50	7.5	241	719	6.7	B A 72dB/B
	255/50R19	107V XL	975	50	7.5	259	738	6.7	B A 73dB/B
	235/50R20	104V XL	900	50	8.0	244	744	6.6	B A 72dB/B
	245/50R20	105V XL	925	50	7.5	248	755	6.6	C A 72dB/B
	275/50R22	115V XL	1215	50	8.5	282	833	6.8	B A 73dB/B
45	205/45R17	88W XL	560	50	6.5	201	618	6.9	B C 72dB/B
	235/45R18	98W XL	750	50	8.0	235	672	6.7	B A 72dB/B
	235/45R19	99W XL	775	50	8.5	242	696	6.7	B A 72dB/B
	245/45R19	102W XL	850	50	8.0	238	703	6.7	B A 72dB/B
	255/45R19	104Y XL	900	50	8.0	251	710	6.7	B A 73dB/B
	235/45R20	100W XL	800	50	8.0	235	722	7.0	B A 72dB/B
	245/45R20	103W XL	875	50	8.0	243	727	6.6	B A 72dB/B
	255/45R20	105Y XL	925	50	8.5	255	735	6.7	B A 73dB/B
	265/45R20	108W XL	1000	50	9.0	267	745	6.6	B A 73dB/B
	275/45R20	110W XL	1060	50	9.0	274	753	6.5	C A 73dB/B
40	235/40R19	96W XL	710	50	9.0	241	670	6.8	B A 72dB/B
	HL 245/40R19	101V XL	825	50	9.0	249	679	6.7	B A 72dB/B
	285/40R19	107W XL	975	50	9.5	290	710	6.5	C A 72dB/A
	245/40R20	99Y XL	775	50	8.5	245	703	6.6	B A 72dB/B



KN1000

For High-performance EVs

Series	Size	Load & Speed Index	Maximum Load	Max. Inflation Pressure	Rim Width	Section Width	Overall Diameter	Tread Depth	  	  	  
			kgs	psi	inches	mm	mm	mm			
40	HL 255/40R20	104Y XL	900	50	8.5	259	711	6.9	B	A	73dB/B
	265/40R20	104W XL	900	50	9.5	270	718	6.5	C	A	73dB/B
	HL 265/40R21	108H XL	1000	50	9.5	269	744	6.6	B	A	73dB/B
	275/40R22	107W XL	975	50	9.5	274	779	6.7	B	A	73dB/B
35	HL 265/35R19	98Y XL	750	50	9.5	265	666	6.6	C	A	73dB/B
	235/35R20	92Y XL	630	50	8.5	238	673	6.7	B	A	72dB/B
	HL 245/35R21	99Y XL	775	50	8.5	241	709	7.1	B	A	72dB/B
	HL 255/35R21	101Y XL	825	50	9.5	262	712	6.7	B	A	73dB/B
	HL 265/35R21	103Y XL	875	50	9.0	263	719	6.9	C	A	73dB/B
	HL 275/35R21	105Y XL	925	50	9.5	271	725	6.9	B	A	73dB/B
	265/35R22	102Y XL	850	50	9.5	269	754	6.7	C	A	73dB/B
	HL 285/35R22	109Y XL	1030	50	10.0	284	758	6.6	B	A	72dB/A
30	295/30R21	102Y XL	850	50	10.5	294	711	6.5	C	A	72dB/A
	HL 305/30R21	107Y XL	975	50	11.0	305	715	6.4	C	A	72dB/A

Upcoming sizes

Series	Size	Load & Speed Index
55	255/55R20	110V
45	295/45R20	114W XL

SA1000

For 4x4s on Highway Terrain

SA1000



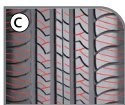
#English

- Specially engineered tread design that delivers stability, precise control and good handling.
- Optimal pitch variation that leads to lower noise and greater ride comfort.
- Uniquely shaped sipes on the tread give better grip and stability in all weather conditions.



#Spanish • Para 4x4 en carretera

- Diseño especial de la banda de rodadura que proporciona estabilidad, control preciso y buena maniobrabilidad.
- La variación óptima del pitch reduce el ruido y aumenta el confort de marcha.
- Las laminillas de forma única en la banda de rodadura proporcionan un mejor agarre y estabilidad en todas las condiciones meteorológicas.



#Portuguese • Para 4x4 em Terreno de Estrada

- Piso especialmente projetado design que proporciona estabilidade, controlo preciso e boa manobrabilidade.
- Variação de passo ideal que leva a menor ruído e maior conforto de condução.
- Lamelas de forma única no piso proporcionam melhor aderência e estabilidade em todas as condições climáticas.

Series	Size	Load & Speed Index	Maximum Load	Max. Inflation Pressure	Rim Width	Section Width	Overall Diameter	Tread Depth			
			kgs	psi	inches	mm	mm	mm			
75	235/75R15	109H XL	1030	50	6.5	236	730	8.6	D	C	72dB/B
	265/75R16	116T	1250	44	7.5	272	797	8.4	D	B	71dB/B
70	215/70R16	100H	800	44	6.5	226	706	8.5	D	C	71dB/B
	235/70R16	106H	950	44	8.0	246	737	8.5	D	C	71dB/B
	245/70R16	111H XL	1090	50	7.0	249	745	8.6	D	B	72dB/B
	255/70R16	111H	1090	44	7.5	260	761	7.5	D	B	72dB/B
	265/70R16	112H	1120	44	8.0	275	772	8.7	D	B	71dB/B
	265/70R17	115H	1215	44	7.0	275	806	8.4	D	B	71dB/B
65	225/65R17	106H XL	950	50	7.0	226	722	8.5	D	C	71dB/B
	235/65R17	104H	900	44	7.0	240	738	8.6	D	C	71dB/B
	245/65R17	111H XL	1090	50	7.0	243	749	8.6	D	C	72dB/B
	255/65R17	114H XL	1180	50	7.0	259	764	8.6	D	B	72dB/B
	265/65R17	116H XL	1120	44	8.0	276	773	7.8	D	C	73dB/B
	255/65R18	111T	1090	44	7.5	264	791	9.5	D	B	72dB/B
	265/65R18	112T	1120	44	8.0	268	797	9.0	C	B	72dB/B
	275/65R18	116H XL	1250	50	8.0	277	813	8.6	C	B	73dB/B
60	235/60R16	100H	800	44	7.0	238	686	8.6	D	C	71dB/B
	215/60R17	96H	710	44	6.5	218	691	8.6	D	C	71dB/B
	235/60R17	102H	850	44	7.0	236	719	8.6	D	C	71dB/B
	235/60R18	107H XL	975	50	7.0	236	743	8.6	D	C	72dB/B
	245/60R18	105H	925	44	7.0	244	748	8.7	D	C	71dB/B
	255/60R18	112H XL	1120	50	7.5	258	765	8.6	D	B	72dB/B
	265/60R18	114H XL	1180	50	8.0	270	776	9.0	C	B	73dB/B
	255/60R19	109H	1030	44	7.5	258	791	9.0	D	B	72dB/B
	275/60R20	115H	1215	44	8.0	278	839	9.7	C	B	73dB/B
55	225/55R18	98H	750	44	7.0	229	707	9.0	D	C	72dB/B
	275/55R20	117H XL	1285	50	8.5	281	810	8.3	C	B	73dB/B
50	255/50R20	109H XL	1030	50	8.0	253	772	9.0	D	B	73dB/B
	265/50R20	111H XL	1090	50	8.5	276	776	7.8	C	B	73dB/B

Upcoming sizes

Series	Size	Load & Speed Index
70	275/70R16	114H
	265/70R18	116H
65	275/65R17	115H
	285/65R17	116H
60	285/60R18	116H
55	265/55R19	113V XL

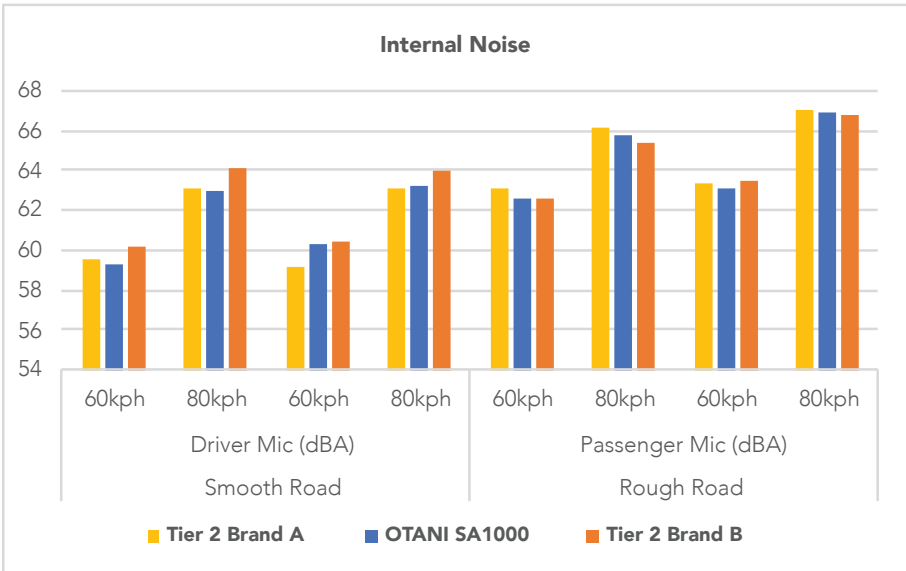
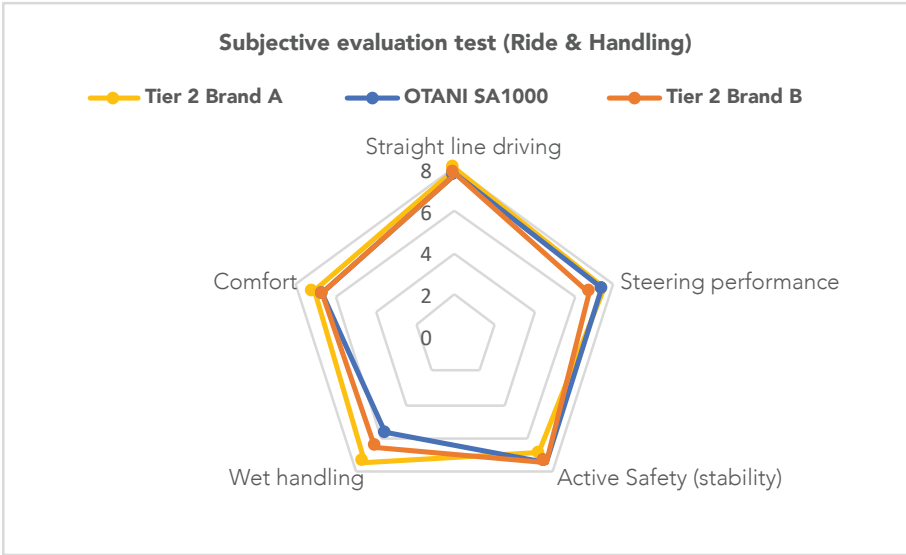
Series	Size	Load & Speed Index
55	265/55R20	113V XL
	285/50R20	116H XL
50	275/50R21	113H XL
	265/50R22	112H XL
40	275/40R17	98H



SA1000

For 4x4s on Highway Terrain

Test Results



SA2000

POR (Professional Off Road)

For 4x4s on All Terrain

SA2000



#English

- a) Special sipe groove design helps improve road grip and traction in muddy conditions.
- b) The shoulder groove has a concave shape that increases driving performance in muddy areas.
- c) The inner shoulder design increases rubber thickness around the tread to prevent sidewall damage and improve traction.



#Spanish • Para 4x4 en todo tipo de terreno

- a) Diseño especial de la ranura del hombro para mejorar el agarre en carretera y aumentarlo en condiciones de barro.
- b) La ranura del hombro tiene una forma cóncava para aumentar el rendimiento de la conducción en zonas de barro.
- c) El diseño del hombro de la cámara de aire tiene relieve. Aumenta el grosor de la textura del caucho alrededor de la banda de rodadura para ayudar a prevenir daños en los flancos y mejorar la fuerza de tracción.



#Portuguese • Para 4x4 em Todo o Terreno

- a) Design especial de ranhura de lamela para ajudar com boa aderência na estrada e aumentar a aderência na estrada em condições lamacentas.
- b) A ranhura do ombro tem uma forma cóncava para aumentar o desempenho de condução em áreas lamacentas.
- c) O design do ombro do tubo interno é em relevo. Aumentar a textura da borracha em torno do piso para ter uma espessura para ajudar a prevenir danos na parede lateral e aumentar a força de tração.

Series	Size	PR	Load & Speed Index	Max Load (Single)	Max Load (Dual)	Max. Inflation Pressure	Rim Width	Section Width	Overall Diameter	Tread Depth
				kgs	kgs	psi	inches	mm	mm	mm
75	LT 265/75R16	8	119/116Q	1360	1250	65	7.5	275	800	11.7
	LT 285/75R16	6	116/113Q	1250	1150	50	8.0	296	829	12.0
70	LT 245/70R16	10	118/115Q	1320	1215	80	7.0	253	746	12.0
	LT 255/70R16*	10	120/117Q	1400	1285	80	7.5	264	762	12.0
65	LT 265/70R16	10	121/118Q	1450	1320	80	8.0	279	774	12.0
	LT 265/65R17	10	120/117Q	1400	1285	80	8.0	274	774	12.0
	LT 265/65R18*	8	117/114Q	1285	1180	65	8.0	270	800	12.0
	LT 285/65R18	8	121/118Q	1450	1320	65	8.5	296	825	12.1
60	LT 265/60R18	10	119/116Q	1360	1250	80	8.0	271	773	12.0
55	LT 275/55R20	10	120/117Q	1400	1285	80	8.5	273	812	12.0
50	265/50R20	-	111Q XL	1090	-	50	8.5	276	776	7.8

* Newly added sizes

All sizes available in BSW & WSW sidewall styles

SA2100

POR (Professional Off Road)

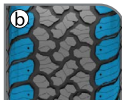
For 4x4s on All Terrain

SA2100



#English

- a) Optimized tread blocks with special sipe design and studded tread holes for excellent stability, traction, low noise and even wear over the long haul.
- b) Stronger shoulder block design with angled shoulder scallops and stone ejectors to resist tearing during manoeuvres in on- and off-road conditions and provide stability on mud and snow conditions.
- c) Reinforced top sidewall with increased rubber thickness and a special rubber formula protects critical sidewall zones, improving tear resistance and mileage.



#Spanish • Para 4x4 en todo tipo de terreno

- a) Bloques de la banda de rodadura optimizados con diseño especial de laminillas y orificios para una excelente estabilidad, tracción, bajo nivel de ruido y desgaste uniforme a largo plazo.
- b) Diseño más resistente de los bloques de los hombros con festones angulares y eyectores de piedras para resistir los desgastes producidos por las maniobras en carretera y fuera de ella, y proporcionar estabilidad en condiciones de barro y nieve.
- c) Flanco superior reforzado con mayor grosor de caucho y fórmula especial de este material para proteger la zona crítica de fallo del flanco y mejorar la resistencia al desgaste y el alto kilometraje.



#Portuguese • Para 4x4 em Todo o Terreno

- a) Blocos de piso otimizados com design especial de lamelas e furos para cravos no piso para excelente estabilidade, tração, baixo ruído e desgaste uniforme ao longo do tempo.
- b) Bloco de ombro mais forte com design de ombro angulado escalopes e ejetores de pedras para resistir a rasgos durante manobras em condições de estrada e fora de estrada e proporcionar estabilidade em lama e condições de neve.
- c) Parede lateral superior reforçada com espessura de borracha aumentada e fórmula especial de borracha para proteger a zona crítica de falha da parede lateral e melhorar a resistência ao rasgo e alta quilometragem.

Series	Size	PR	Load & Speed Index	Max Load (Single)	Max Load (Dual)	Max. Inflation Pressure	Rim Width	Section Width	Overall Diameter	Tread Depth
				kgs	kgs	psi	inches	mm	mm	mm
Flotation	LT 31X10.50R15	6	109Q	1030	-	50	8.5	268	773	12.3
	LT 33X12.50R17	10	120Q	1400	-	65	10.0	320	825	14.5
	LT 35X12.50R17	10	121Q	1450	-	65	10.0	333	876	14.4
	LT 33X12.50R18	10	118Q	1320	-	65	10.0	316	825	14.4
	LT 35X12.50R18	8	118Q	1320	-	50	10.0	325	875	14.3
	LT 33X12.50R20	12	119Q	1360	-	80	10.0	312	826	15.0
70	LT 35X12.50R20	10	121Q	1450	-	65	10.0	317	879	14.6
	LT 285/70R17*	6	116/113Q	1250	1150	50	8.5	293	831	12.0
	LT 275/70R18*	6	115/112Q	1215	1120	50	8.0	272	843	12.9

* Newly added sizes

All sizes available in BSW & WSW sidewall styles

SA3000

For 4x4s on All Terrain

SA3000



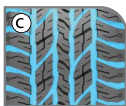
#English

- a) Aggressive tread block design that matches all kinds of road terrains and delivers enhanced stability.
- b) 3D sipes leading to outstanding braking performance in wet conditions and delivers enhanced ride comfort.
- c) Continuous open lateral channels increase tyre grip under skidding conditions and provide enhanced safety.



#Spanish • Para 4x4 en todo tipo de terreno

- a) Diseño agresivo de los bloques de la banda de rodadura que se adapta a todo tipo de terrenos y proporciona una mayor estabilidad.
- b) Las laminillas 3D proporcionan un excelente rendimiento de frenado sobre mojado y un mayor confort de marcha.
- c) Los canales laterales abiertos mejoran el agarre del neumático en condiciones de derrape y proporcionan una mayor seguridad.



#Portuguese • Para 4x4 em Todo o Terreno

- a) Design agressivo do bloco do piso que se adapta a todos os tipos de terrenos e proporciona estabilidade aprimorada.
- b) Laminas 3D que levam a um desempenho de travagem excepcional em condições molhadas e proporcionam condições e oferece maior conforto de condução.
- c) Canais laterais abertos contínuos aumentam a aderência do pneu em condições de derrapagem e proporcionam maior segurança.

Series	Size	Load & Speed Index	Maximum Load	Max. Inflation Pressure	Rim Width	Section Width	Overall Diameter	Tread Depth			
			kgs	psi	inches	mm	mm	mm			
75	235/75R15	109T XL	1030	50	6.5	236	730	8.6	C	C	72dB/B
	265/75R16	116S XL	1250	50	7.5	272	797	8.4	C	C	72dB/B
70	225/70R15	100T	800	44	6.5	230	693	9.5	D	C	71dB/B
	235/70R15	106T XL	950	50	6.5	242	710	9.5	D	C	71dB/B
	255/70R15	108T	1000	44	8.0	258	734	9.4	C	C	72dB/B
	235/70R16	109T XL	1030	50	7.0	246	737	8.5	C	C	72dB/B
	245/70R16	111T XL	1090	50	7.0	249	745	8.6	C	C	71dB/B
	265/70R16	112T	1120	44	7.0	275	772	8.7	C	C	72dB/B
65	265/65R17	112T	1120	44	8.0	276	773	7.8	C	C	72dB/B
	255/65R18	111T	1090	44	7.5	264	791	9.5	C	C	72dB/B
	275/65R18	116T XL	1250	50	8.0	277	813	8.6	C	C	72dB/B
60	265/60R18	114T XL	1180	50	8.0	278	776	8.0	C	C	72dB/B
55	255/55R20	110T XL	1060	50	8.0	264	789	9.6	C	C	72dB/B
	275/55R20	117T XL	1285	50	8.5	281	810	8.3	C	C	72dB/B
50	265/50R20	111S XL	1090	50	8.5	276	776	7.8	C	C	72dB/B

All sizes available in BSW & OWL sidewall styles

Upcoming sizes

Series	Size	Load & Speed Index
75	285/75R16	116T
	285/70R17	117T
70	315/70R17	116T
	275/70R18	116T

SA4000

POR (Professional Off Road)

For 4x4s on Mud Terrain

SA4000



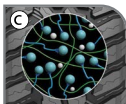
#English

- a) Optimized tread block design with open shoulders and raised bars in between for excellent traction and releasing compacted mud on all muddy roads.
- b) Stronger casing for aggressive usage conditions, with a reinforced top-shoulder and three-ply construction to protect critical sidewall failure zones.
- c) Cut-and-chip-resistance tread rubber compound resists off-road abuse even in aggressive driving on rocky and mud terrains.



#Spanish • Para 4x4 en terrenos de barro

- a) Diseño optimizado de los bloques de la banda de rodadura con hombros abiertos y barras elevadas en medio Para una excelente tracción y liberación del barro compactado en todos los caminos embarrados.
- b) Carcasa más resistente para condiciones de uso agresivas Con flanco superior reforzado y construcción de 3 capas para proteger la zona crítica de fallo del flanco.
- c) Compuesto de caucho de la banda de rodadura resistente a cortes y roturas Resiste el abuso fuera de carretera incluso en conducción agresiva sobre terrenos rocosos y embarrados.



#Portuguese • Para 4x4 em Terreno de Lama

- a) Design otimizado do bloco do piso com ombros abertos e barras elevadas entre eles Para excelente tração e liberação de lama compactada em todas as estradas lamacentas.
- b) Carcaça mais forte para condições de uso agressivas. Com reforço na parte superior da parede lateral e construção de 3 camadas para proteger contra falhas críticas na parede lateral zona.
- c) Composto de borracha da banda de rodagem resistente a cortes e lascas. Resiste ao abuso fora de estrada, mesmo em condução agressiva em terrenos rochosos e lamacentos.

Series	Size	PR	Load & Speed Index	Maximum Load	Max. Inflation Pressure	Rim Width	Section Width	Overall Diameter	Tread Depth
				kgs	psi	inches	mm	mm	mm
Flotation	LT 33X12.50R20	10	114Q	1180	65	10.0	320	824	14.0
	LT 33X12.50R20	12	119Q	1360	80	10.0	317	829	14.0
	LT 35X12.50R20*	10	121Q	1450	65	10.0	315	875	14.5

* Available in BSW & RWL sidewall styles

SA5000

POR (Professional Off Road)

For 4x4s on Mud Terrain

SA5000



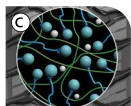
#English

- a) Optimized tread block design with open shoulders and raised bars in between for excellent traction and releasing compacted mud on all muddy roads.
- b) Stronger casing for aggressive usage conditions, with a reinforced top-sidewall and three-ply construction to protect critical sidewall failure zones.
- c) Cut-and-chip-resistance tread rubber compound for aggressive usage conditions with tearing resistance compound.



#Spanish • Para 4x4 en terrenos de barro

- a) Diseño optimizado de los bloques de la banda de rodadura con hombros abiertos y barras elevadas en medio para una excelente tracción y liberación del barro compactado en todos los caminos embarrados.
- b) Carcasa más resistente para condiciones de uso agresivas con flanco superior reforzado y construcción de 3 capas para proteger la zona crítica de fallo del flanco.
- c) Compuesto de caucho de la banda de rodadura resistente a cortes y roturas para condiciones de uso agresivas con compuesto que evita el desgaste.



#Portuguese • Para 4x4 em Terreno de Lama

- a) Design otimizado dos blocos da banda de rodagem com ombros abertos e barras elevadas entre eles para excelente tração e liberação de lama compactada em todas as estradas lamacentas.
- b) Carcaça mais forte para condições de uso agressivas com reforço na parte superior da parede lateral e construção de 3 camadas para proteger contra falhas críticas na parede lateral zona.
- c) Composto de borracha da banda de rodagem resistente a cortes e lascas para condições de uso agressivas com resistência ao rasgo composto.

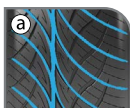
Series	Size	PR	Load & Speed Index	Max Load (Single)	Max Load (Dual)	Max. Inflation Pressure	Rim Width	Section Width	Overall Diameter	Tread Depth
				kgs	kgs	psi	inches	mm	mm	mm
Flotation	LT 33X12.50R20	10	114Q	1180	-	65	10.0	317	825	13.5
70	LT 265/70R16	10	121/118Q	1450	1320	80	8.0	278	778	13.3
65	LT 265/65R17	10	120/117Q	1400	1285	80	8.0	276	775	12.9
60	LT 265/60R18	10	119/116Q	1360	1250	80	8.0	267	775	12.8
55	LT 275/55R20	10	120/117Q	1400	1285	80	8.5	278	813	12.9
50	LT 265/50R20	10	115/112Q	1215	1120	80	8.5	277	780	13.2

All sizes available in BSW & RWL sidewall styles

BM1000

For Crossovers and Sports Utility Vehicles

BM1000



#English

- a) Wide circumferential groove for firm grip and to reduce hydroplaning.
- b) Large outer tread block to increase the tread footprint for better handling on cornering.
- c) Small inner tread blocks and various sipes on the tread to achieve shorter braking distance and to enhance vehicle stability.

#Spanish • Para crossovers y vehículos utilitarios deportivos

- a) Ranura circunferencial ancha para un agarre firme y para reducir el aquaplaning.
- b) Bloque exterior de la banda de rodadura grande para aumentar la huella y mejorar la maniobrabilidad en las curvas.
- c) Pequeños bloques interiores y varias ranuras en la banda de rodadura para reducir la distancia de frenado y mejorar la estabilidad del vehículo.

#Portuguese • Para Crossovers e Veículos Utilitários Desportivos

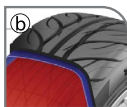
- a) Ranhura circunferencial larga para uma aderência firme e para reduzir aquaplanagem.
- b) Grande bloco de piso externo para aumentar a área de contacto do piso para melhor manuseio em curvas.
- c) Pequenos blocos de piso internos e várias lamelas no piso para alcançar uma distância de travagem mais curta e para melhorar a estabilidade do veículo.

Series	Size	Load & Speed Index	Maximum Load	Max. Inflation Pressure	Rim Width	Section Width	Overall Diameter	Tread Depth			
			kgs	psi	inches	mm	mm	mm			
65	265/65R17	116V XL	1250	50	8.0	276	773	7.8	C	B	72dB/B
	225/60R18	104V XL	900	50	7.0	233	725	7.9	C	C	71dB/B
60	265/60R18	114V XL	1180	50	8.0	278	776	8.0	C	B	72dB/B
	235/55R18	104V XL	900	50	7.5	241	717	7.4	C	C	71dB/B
55	255/55R18	109V XL	1030	50	8.0	266	738	7.9	C	C	72dB/B
50	255/50R18	106V XL	950	50	8.0	263	714	7.8	C	C	72dB/B
	265/50R20	111V XL	1090	50	8.5	276	776	7.8	C	B	72dB/B
45	235/45R18	98V XL	750	50	8.0	236	668	7.8	C	C	71dB/B
	245/45R18	100V XL	800	50	8.0	242	677	7.8	C	C	71dB/B
	255/45R18	103V XL	875	50	8.0	252	686	7.7	C	C	72dB/B
40	235/40R18	95V XL	690	50	8.5	242	647	7.8	C	C	71dB/B
	245/40R18	97V XL	730	50	8.5	245	657	7.3	C	C	71dB/B
	275/40R18	103V XL	875	50	9.5	276	678	7.7	C	B	72dB/B
35	265/35R18	97V XL	730	50	9.5	268	642	7.8	C	B	72dB/B

BM2000

For Race/Tuning

BM2000



#English

- Optimized groove design provides hydroplaning resistance and offers shorter braking distance.
- Extra high-performance rubber compound provides superior grip on dry and wet roads. High stiffness casing with rim guard construction helps in sharp steering response.
- Massive shoulder ribs and wider tread design provides outstanding cornering grip thereby shortening the lap times.

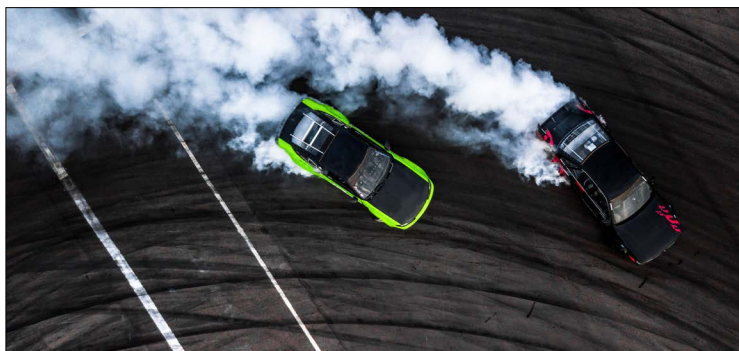
#Spanish • Para carreras/tuneo

- El diseño optimizado de los surcos proporciona resistencia al aquaplaning y ofrece una distancia de frenado más corta.
- El compuesto de caucho de alta calidad garantiza un mejor agarre en carreteras secas y mojadas. Carcasa de gran rigidez con construcción de protección de llanta que ayuda a una respuesta rápida en la conducción.
- Las enormes nervaduras de los hombros y el diseño más ancho de la banda de rodadura proporcionan un agarre excepcional en las curvas, acortando así los tiempos por vuelta.

#Portuguese • Para Corrida/Ajuste

- O design otimizado das ranhuras proporciona resistência à aquaplanagem e oferece uma distância de travagem mais curta distância de travagem.
- O composto de borracha de alto desempenho extra proporciona uma aderência superior em estradas secas e molhadas. Carcaça de alta rigidez com construção de proteção de aro ajuda na resposta de direção precisa.
- Costelas de ombro maciças e design de piso mais largo proporcionam aderência excepcional em curvas, encurtando assim a volta tempos.

Series	Size	Load & Speed Index	Maximum Load	Max. Inflation Pressure	Rim Width	Section Width	Overall Diameter	Tread Depth			
			kgs	psi	inches	mm	mm	mm			
60	265/60R18	114V XL	1180	50	8.0	278	776	8.0	C	C	73dB/B
	195/55R15	85V	515	44	6.0	200	594	7.4	D	C	71dB/B
55	255/55R18	109V XL	1030	50	8.0	266	738	7.9	C	C	73dB/B
	195/50R15	82V	475	44	6.0	196	579	7.4	D	C	71dB/B
50	255/50R18	106V XL	950	50	8.0	263	714	7.8	C	C	73dB/B
	215/45ZR17	91W XL	615	50	7.5	217	628	7.4	D	C	72dB/B
45	225/45ZR17	91W	615	44	7.5	228	635	7.3	D	C	71dB/B
	245/45ZR18	96W	710	44	8.0	242	677	7.8	D	C	71dB/B
	235/40ZR17	90W	600	44	8.0	247	621	8.0	D	C	71dB/B
40	245/40ZR17	95W XL	690	50	8.5	251	627	8.0	D	C	71dB/B
	255/40ZR17	98W XL	750	50	8.5	259	637	8.0	D	C	73dB/B
	225/40ZR18	88W	560	44	8.0	231	640	7.3	D	C	71dB/B
	235/40ZR18	91W	615	44	8.0	242	647	7.8	D	C	71dB/B
	275/40ZR18	103W XL	875	50	10.0	276	678	7.7	C	C	73dB/B
35	255/35ZR18	94W XL	670	50	9.5	254	637	8.0	D	C	73dB/B
	265/35ZR18	93W	650	44	10.0	268	642	7.8	D	C	72dB/B
	285/35ZR18	101W XL	825	50	10.0	281	659	8.0	D	C	74dB/B





MK1000

For Pick-up Trucks and Transport Vehicles

MK1000



#English

- a) Robust tread design that enhances durability and load carrying capacity.
- b) Reinforced casing offers high endurance needed in commercial transportation.
- c) Large tread blocks help deliver superior traction in all road conditions.



#Spanish • Para camionetas y vehículos de transporte

- a) Diseño robusto de la banda de rodadura que mejora la durabilidad y la capacidad de carga.
- b) La carcasa reforzada ofrece una gran resistencia, necesaria para el transporte comercial.
- c) Los grandes bloques de la banda de rodadura ayudan a proporcionar una tracción superior en todas las condiciones de la carretera.



#Portuguese • Para Camiononetes, Furgões e Veículos de Transporte

- a) Design de piso robusto que melhora a durabilidade e a capacidade de carga.
- b) Carcaça reforçada oferece alta resistência necessária em transporte comercial.
- c) Grandes blocos de piso ajudam a proporcionar tração superior em todas as condições de estrada.

Series	Size	PR	Load & Speed Index	Max Load (Single)	Max Load (Dual)	Max. Inflation Pressure	Rim Width	Section Width	Overall Diameter	Tread Depth			
				kgs	kgs	psi	inches	mm	mm	mm			
LTRC	185R14C	8	102/100Q	850	800	65	5.5	194	646	8.2	D	C	71dB/B
	195R14C	8	106/104Q	950	900	65	5.5	203	669	8.5	D	B	71dB/B
	205R14C	8	109/107Q	1030	975	65	6.0	212	680	8.3	D	B	71dB/B
	195R15C	8	108/106S	1000	950	68	5.5	204	691	8.4	D	B	71dB/B
75	205/75R14C*	8	109/107Q	1030	975	68	5.5	206	661	8.4	D	B	71dB/B
	225/75R14C	8	115/113P	1215	1150	68	6.0	231	699	8.5	C	B	73dB/A
	225/75R15C	8	116/114Q	1250	1180	68	6.0	231	725	8.5	C	B	73dB/A

* Available in BSW & WSW sidewall styles

Upcoming size

Series	Size	Load & Speed Index
70	225/70R15C	112/110S

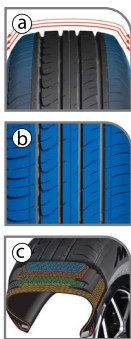




MK2000

For Vans and Transport Vehicles

MK2000



#English

- a) Square shoulders ensure optimal footprint thereby enhancing stability.
- b) Symmetrical tread design prevents heat buildup and wider grooves ensure easier water drainage.
- c) Reinforced casing offers high endurance needed in commercial transportation.

#Spanish • Para furgonetas y vehículos de transporte

- a) Los hombros cuadrados garantizan una huella óptima, mejorando así la estabilidad.
- b) El diseño simétrico de la banda de rodadura evita la acumulación de calor y los surcos más anchos facilitan el drenaje del agua.
- c) La carcasa reforzada ofrece una gran resistencia, necesaria para el transporte comercial.

#Portuguese • Para Furgões e Veículos de Transporte

- a) Ombros quadrados garantem uma pegada ideal, melhorando assim a estabilidade.
- b) O design simétrico do piso evita o acúmulo de calor e ranhuras mais largas garantem uma drenagem de água mais fácil.
- c) Carcaça reforçada oferece alta resistência necessária em transporte comercial.

Series	Size	PR	Load & Speed Index	Max Load (Single)	Max Load (Dual)	Max. Inflation Pressure	Rim Width	Section Width	Overall Diameter	Tread Depth			
				kgs	kgs	psi	inches	mm	mm	mm			
LTRC	205R16C	8	110/108S	1060	1000	65	6.0	212	734	8.3	D	B	71dB/B
75	225/75R14C	8	115/113Q	1215	1150	68	6.0	226	689	8.4	D	A	71dB/B
	225/75R15C	8	110/108Q	1060	1000	55	6.0	231	725	8.5	D	A	71dB/B
	195/75R16C	10	110/108T	975	925	68	5.5	204	696	8.3	D	C	71dB/B
	215/75R16C	10	116/114R	1150	1090	68	6.0	221	724	8.5	D	B	71dB/B
70	195/70R15C	8	104/102S	900	850	65	6.0	203	653	8.4	D	C	71dB/B
	205/70R15C	8	106/104S	950	900	65	6.0	209	668	9.0	D	B	71dB/B
	215/70R15C	8	109/107S	1030	975	65	6.5	225	681	9.0	D	B	72dB/B
	225/70R15C	8	112/110S	1120	1060	65	6.5	230	695	8.3	C	A	71dB/B
	215/70R16C	8	108/106S	1000	950	55	6.5	225	705	8.4	D	B	71dB/B
65	195/65R16C	8	104/102T	900	850	68	6.0	201	657	8.4	D	C	71dB/B
	215/65R16C	8	109/107T	950	900	55	6.5	220	685	8.4	D	B	71dB/B
	225/65R16C	8	112/110T	1120	1060	68	6.5	226	694	8.4	C	A	71dB/B
	235/65R16C	10	121/119R	1450	1360	85	7.0	240	708	8.4	C	A	71dB/B



MK3000

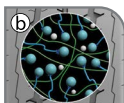
For Pick-up Trucks and Transport Vehicles

MK3000



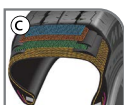
#English

- a) Rugged, aggressive and uniquely shaped blocks on inner ribs and shoulder blocks deliver superior grip in the most demanding condition.
- b) Special tread compound provides high mileage and low energy consumption.
- c) Strong casing ensures long-lasting performance.



#Spanish • Para camionetas y vehículos de transporte

- a) Las nervaduras interiores tienen bloques robustos, agresivos y de forma única, y los bloques del hombro proporcionan un agarre superior en las condiciones más exigentes.
- b) El compuesto especial de la banda de rodadura proporciona un alto kilometraje y un bajo consumo de energía.
- c) Carcasa resistente para un uso prolongado.



#Portuguese • Para Camionhetes, Furgões e Veículos de Transporte

- a) Blocos robustos, agressivos e de forma única nas ripas internas e blocos de ombro proporcionam aderência superior nas condições mais exigentes.
- b) Composto de piso especial proporciona alta quilometragem e baixo consumo de energia.
- c) Carcaça forte para garantir longevidade de uso.

Series	Size	PR	Load & Speed Index	Max Load (Single)	Max Load (Dual)	Max. Inflation Pressure	Rim Width	Section Width	Overall Diameter	Tread Depth			
				kgs	kgs	psi	inches	mm	mm	mm			
LTRC	195R14C*	8	106/104S	950	900	65	5.5	201	661	9.1	C	C	72dB/B
	205R14C	8	109/107Q	1030	975	65	6.0	213	680	9.3	C	C	72dB/B
	195R15C*	8	106/104Q	950	900	65	5.5	205	684	9.3	C	C	72dB/B

* Available in BSW & WSW sidewall styles



WE1000

Studless Winter PCR

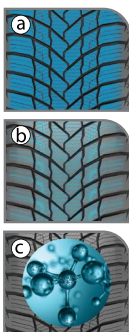


WE1000

STUDLESS M+S 

For Passenger Cars in Winter

WE1000



#English




- a) The V-shaped tread design with an increased void ratio provides excellent winter performance by reducing hydroplaning and enabling quicker snow and ice evacuation.
- b) The variable sipe design with varied depths provides exceptional grip and shorter braking distances on snowy and icy roads.
- c) A new generation silica-resin-based compound provides improved snow traction, maximum safety performance, and longer tyre life.

#Spanish • Para turismos en condiciones de invierno

- a) Diseño de la banda de rodadura en forma de V con mayor proporción de vacío garantiza un excelente rendimiento en invierno frente al aquaplaning para una evacuación más rápida de la nieve y el hielo.
- b) Diseño de laminillas variables con distintas profundidades ofrece un agarre excepcional y una menor distancia de frenado en carreteras nevadas y heladas.
- c) Compuesto de nueva generación a base de resina de sílice mantiene una tracción mejorada sobre nieve, un nivel máximo de prestaciones de seguridad y una mayor vida útil del neumático.

#Portuguese • Para Carros de Passageiros no Inverno

- a) Design do piso em forma de V com maior relação de vazio proporciona excelente desempenho de inverno contra hidroplanagem para uma evacuação mais rápida de hidroplanagem para mais rápido neve e gelo.
- b) Design de lamelas variáveis com profundidades variadas oferece aderência excepcional e distância de travagem mais curta em estradas com neve e gelo.
- c) Nova geração de composto à base de resina de sílica mantendo melhor desempenho na neve tração, nível máximo de desempenho de segurança e vida útil mais longa do pneu.

Series	Size	Load & Speed Index	Maximum Load	Max. Inflation Pressure	Rim Width	Section Width	Overall Diameter	Tread Depth			
			kgs	psi	inches	mm	mm	mm			
70	175/70R14	84T	500	44	5.5	178	600	8.0	D	B	71dB/B
	175/70R14	88T XL	560	50	5.0	179	600	8.0	D	B	71dB/B
	175/65R14	82T	475	44	5.0	178	585	8.5	D	B	71dB/B
65	185/65R14	86T	530	44	5.5	189	595	8.3	D	B	71dB/B
	185/65R15	88T	560	44	5.0	186	623	8.1	D	B	71dB/B
	185/65R15	88H	560	44	5.0	186	623	8.1	D	B	71dB/B
	195/65R15	91T	615	44	6.0	201	635	8.4	C	B	71dB/B
	195/65R15	91H	615	44	6.0	201	635	8.4	C	B	71dB/B
	205/65R15	94H	670	44	6.0	208	648	8.3	C	B	71dB/B
	215/65R16	98H	750	44	6.5	222	686	8.2	C	B	71dB/B
	215/65R16	102H XL	850	50	6.5	222	686	8.2	C	B	71dB/B
	185/60R14	82T	475	44	5.5	190	576	7.8	D	B	71dB/B
60	185/60R15	84T	500	44	5.5	186	603	8.0	D	B	71dB/B
	185/60R15	88T XL	560	50	5.5	186	603	8.0	C	B	71dB/B
	195/60R15	88T	560	44	6.0	198	617	8.3	D	B	71dB/B
	205/60R16	92H	630	44	6.0	205	654	8.2	C	B	71dB/B
	205/60R16	96H XL	710	50	6.0	205	654	8.2	C	B	71dB/B
	215/60R16	99H XL	775	50	6.5	217	665	8.1	C	B	71dB/B
	195/55R15	85H	515	44	6.0	196	595	8.2	D	B	71dB/B
55	195/55R15	89H XL	580	50	6.0	196	595	8.2	C	B	71dB/B
	195/55R16	87H	545	44	6.5	197	621	8.1	D	B	71dB/B
	195/55R16	91H XL	615	50	6.5	197	621	8.1	C	B	71dB/B



WE1000

STUDLESS M+S 

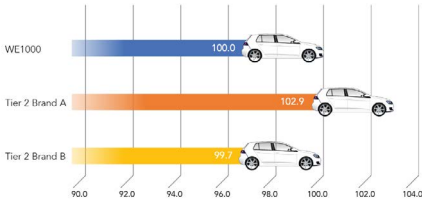
For Passenger Cars in Winter

Performance comparison between WE1000 and other brands

Tyre Size Tested: 185/60R14 82T

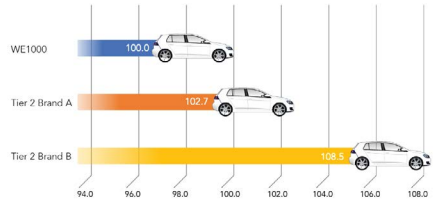
SNOW BRAKING INDEX

METHOD: ABS BRAKING 25 - 5 KM/H -5°C
In all the graphs below, the longer the bar, the better the performance of the tire



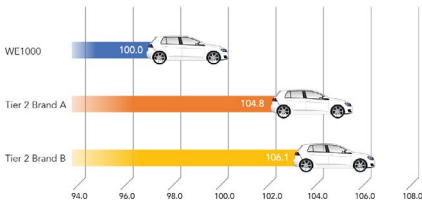
ICE BRAKING INDEX

METHOD: ABS BRAKING 25 - 5 KM/H -10°C
In all the graphs below, the longer the bar, the better the performance of the tire



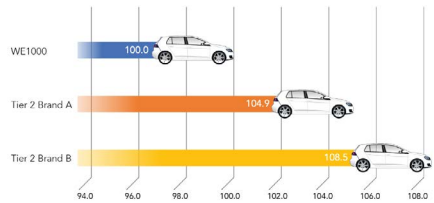
SNOW ACCELERATION INDEX

METHOD: TCS ACCELERATION 5 - 30 KM/H -5°C
In all the graphs below, the longer the bar, the better the performance of the tire



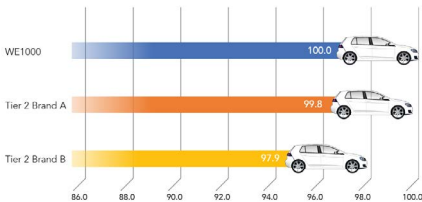
ICE ACCELERATION INDEX

METHOD: TCS ACCELERATION 5 - 25 KM/H -10°C
In all the graphs below, the longer the bar, the better the performance of the tire



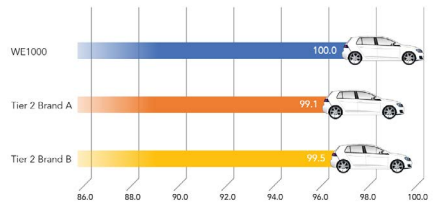
SNOW HANDLING INDEX

METHOD: LAP/SPLIT TIMES -11°C
In all the graphs below, the longer the bar, the better the performance of the tire



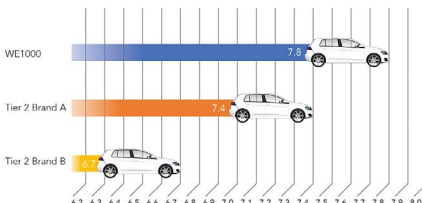
ICE HANDLING INDEX

METHOD: LAP/SPLIT TIMES -15°C
In all the graphs below, the longer the bar, the better the performance of the tire



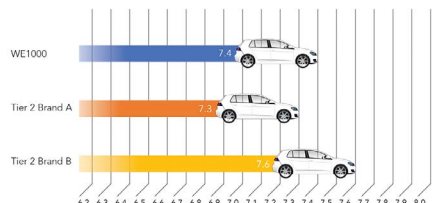
SNOW SUBJECTIVE EVALUATION RATING

SUBJECTIVE EVALUATION PARAMETERS
Steering, Controllability, Acceleration & Deceleration



ICE SUBJECTIVE EVALUATION RATING

SUBJECTIVE EVALUATION PARAMETERS
Steering, Controllability, Acceleration & Deceleration



WK1000

Studless Winter UHP

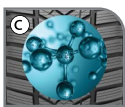


WK1000

STUDLESS M+S 

For High-performance and Luxury Vehicles in Winter

WK1000



#English




- a) Directional tread pattern with wide center block for improved stability and handling on snowy roads.
- b) Wide shoulder blocks for increased grip and greater cornering and traction on slippery surfaces.
- c) New generation of silica-resin based compound maintaining improved snow traction, maximum level of safety performance and longer tyre life.

#Spanish

- a) Dibujo direccional de la banda de rodadura con bloque central ancho para mejorar la estabilidad y la maniobrabilidad en carreteras nevadas.
- b) Tacos anchos en los hombros para un mayor agarre y tracción en curvas sobre superficies resbaladizas.
- c) Compuesto de nueva generación a base de resina de sílice para una mejor tracción sobre nieve, un nivel máximo de prestaciones de seguridad y una mayor vida útil del neumático.

#Portuguese

- a) Padrão de piso direccional com bloco central largo para melhorar a estabilidade e manuseio em estradas com neve.
- b) Blocos largos nos ombros para maior aderência e melhor curva e tração em superficies escorregadizas.
- c) Nova geração de composto à base de resina de sílica mantendo melhor desempenho na neve tração, nível máximo de desempenho de segurança e vida útil mais longa do pneu.

Series	Size	Load & Speed Index	Maximum Load	Max. Inflation Pressure	Rim Width	Section Width	Overall Diameter	Tread Depth			
			kgs	psi	inches	mm	mm	mm			
65	225/65R17	102H	850	44	6.5	221	725	7.7	C	C	72dB/B
	225/65R17	106H XL	950	50	6.5	221	725	7.7	C	C	72dB/B
60	225/60R17	99V	775	44	6.5	224	707	7.9	D	C	72dB/B
	225/60R17	103H XL	875	50	6.5	224	707	7.9	C	C	72dB/B
55	205/55R16	91H	615	44	6.0	209	633	7.7	D	C	72dB/B
	205/55R16	94V XL	670	50	6.0	209	633	7.7	D	C	72dB/B
	215/55R16	97H XL	730	50	6.5	222	643	8.2	D	C	72dB/B
	215/55R16	97V XL	730	50	6.5	222	643	8.2	D	C	72dB/B
	225/55R16	99V XL	775	50	7.0	229	654	8.6	C	C	72dB/B
	215/55R17	98V XL	750	50	7.0	223	674	8.3	D	C	72dB/B
	225/55R17	97H	730	44	7.0	229	686	8.4	D	C	72dB/B
	225/55R17	101V XL	825	50	7.0	229	686	8.4	C	C	72dB/B
	235/55R17	103H XL	875	50	7.5	239	693	8.3	C	C	72dB/B
	235/55R17	103V XL	875	50	7.5	239	693	8.3	C	C	72dB/B
	225/55R18	102H XL	850	50	7.0	227	712	8.4	C	C	72dB/B
	225/55R18	102V XL	850	50	7.0	227	712	8.4	C	C	72dB/B
	235/55R18	104H XL	900	50	7.0	237	719	7.7	C	C	72dB/B
	235/55R18	104V XL	900	50	7.0	237	719	7.7	C	C	72dB/B
50	205/50R17	93V XL	650	50	6.5	208	642	7.8	D	C	72dB/B
	225/50R17	98V XL	750	50	7.0	224	663	7.9	D	C	72dB/B
45	215/45R17	91V XL	615	50	7.5	213	631	8.3	D	C	72dB/B
	225/45R17	94H XL	670	50	7.5	219	641	8.3	D	C	72dB/B
	225/45R17	94V XL	670	50	7.5	219	641	8.3	D	C	72dB/B
40	225/40R18	92V XL	630	50	8.0	221	647	8.3	D	C	72dB/B
	245/40R18	97V XL	730	50	8.5	243	657	8.0	D	C	72dB/B

WK1000

STUDLESS M+S 

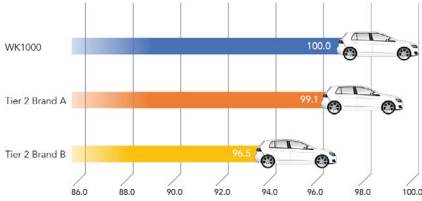
For High-performance and Luxury Vehicles in Winter

Performance comparison between WK1000 and other brands

Tyre Size Tested: 245/40R18 97V

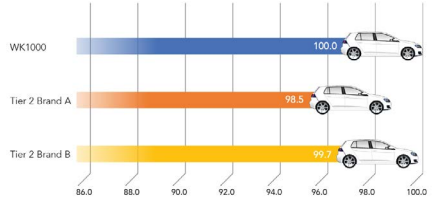
SNOW BRAKING INDEX

METHOD: ABS BRAKING 30 - 5 KM/H -8°C
In all the graphs below, the longer the bar, the better the performance of the tire



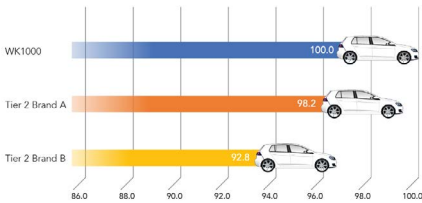
ICE BRAKING INDEX

METHOD: ABS BRAKING 25 - 5 KM/H -10°C
In all the graphs below, the longer the bar, the better the performance of the tire



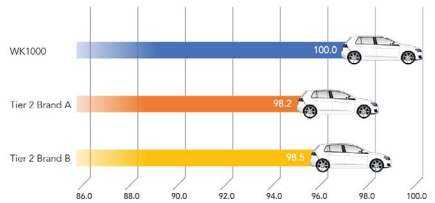
SNOW ACCELERATION INDEX

METHOD: TCS ACCELERATION 5 - 30 KM/H -8°C
In all the graphs below, the longer the bar, the better the performance of the tire



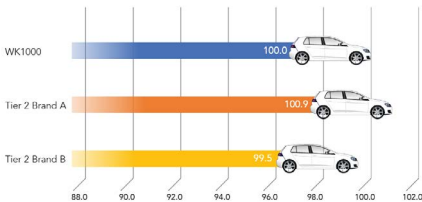
ICE ACCELERATION INDEX

METHOD: TCS ACCELERATION 5 - 25 KM/H -10°C
In all the graphs below, the longer the bar, the better the performance of the tire



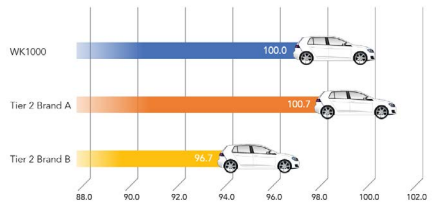
SNOW HANDLING INDEX

METHOD: LAP/SPLIT TIMES -11°C
In all the graphs below, the longer the bar, the better the performance of the tire



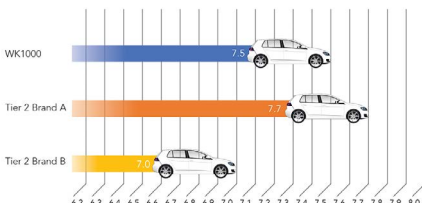
ICE HANDLING INDEX

METHOD: LAP/SPLIT TIMES -15°C
In all the graphs below, the longer the bar, the better the performance of the tire



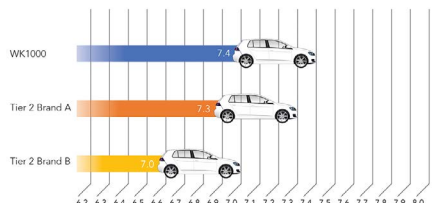
SNOW SUBJECTIVE EVALUATION RATING

SUBJECTIVE EVALUATION PARAMETERS
Steering, Controllability, Acceleration & Deceleration



ICE SUBJECTIVE EVALUATION RATING

SUBJECTIVE EVALUATION PARAMETERS
Steering, Controllability, Acceleration & Deceleration



WM1000

Studless Winter Van



WM1000

STUDLESS M+S 

For Vans and Transport Vehicles in Winter

WM1000



#English

- a) Rugged casing construction with four-block tread design and variable sipe depth provides higher load carrying capacity, offers excellent grip and delivers longer tyre life.
- b) Wide longitudinal groove create open channels that provide quicker ice and snow evacuation.
- c) Square shoulders provide optimal footprint for better tread contact on ice and snow roads.






#Spanish • Para furgonetas y vehículos de transporte en condiciones de invierno

- a) Robusta construcción de la carcasa con un diseño de la banda de rodadura de cuatro bloques y laminillas de profundidad variable proporciona una mayor capacidad de carga, ofrece un excelente agarre y garantiza una mayor vida útil del neumático.
- b) Ranuras longitudinales anchas con canales abiertos que proporcionan una evacuación más rápida del hielo y la nieve.
- c) Hombros cuadrados proporcionan una huella óptima para un mayor contacto de la banda de rodadura en carreteras con hielo y nieve.



#Portuguese • Para Furgões e Veículos de Transporte no Inverno

- a) Construção robusta da carcaça com design de piso de quatro blocos & profundidade variável das lamelas proporciona maior capacidade de carga, oferece excelente aderência e proporciona maior vida útil do pneu.
- b) Ranhuras longitudinais largas criam canais abertos que proporcionam evacuação mais rápida de gelo & neve.
- c) Ombros quadrados proporcionam uma pegada ideal para melhor contato do piso em estradas com gelo & neve.

Series	Size	PR	Load & Speed Index	Max Load (Single)	Max Load (Dual)	Max. Inflation Pressure	Rim Width	Section Width	Overall Diameter	Tread Depth			
				kgs	kgs	psi	inches	mm	mm	mm			
75	195/75R16C	10	110/108R	1060	1000	75	6.0	203	697	9.6	D	C	72dB/B
70	195/70R15C	8	104/102S	900	850	65	5.5	205	656	9.7	D	C	72dB/B
	215/70R15C	8	109/107S	1030	975	65	6.0	221	682	10.0	D	B	72dB/B
	225/70R15C	8	112/110S	1120	1060	65	6.0	228	696	9.7	D	B	72dB/B
65	205/65R16C	8	107/105T	975	925	68	6.0	208	672	9.7	D	C	72dB/B
	215/65R16C	8	109/107R	1030	975	68	6.0	220	684	8.4	D	B	72dB/B
	235/65R16C	8	115/113R	1215	1150	68	7.5	244	707	9.8	D	B	72dB/B
	235/65R16C	10	121/119R	1450	1360	85	7.5	244	707	9.8	D	B	72dB/B



WM1000

STUDLESS M+S 

For Vans and Transport Vehicles in Winter

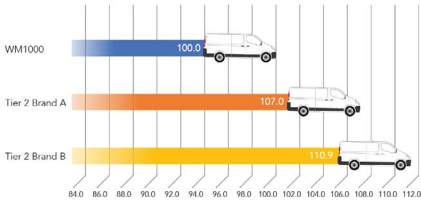
Performance comparison between WM1000 and other brands

Tyre Size Tested: 235/65R16C 115/113R

SNOW BRAKING INDEX

METHOD: ABS BRAKING 30 - 5 KM/H -11°C

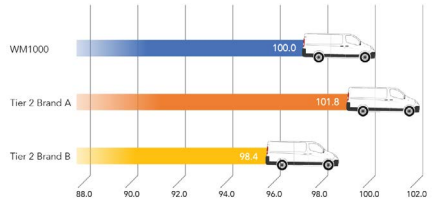
In all the graphs below, the longer the bar, the better the performance of the tire



ICE BRAKING INDEX

METHOD: ABS BRAKING 25 - 5 KM/H -8°C

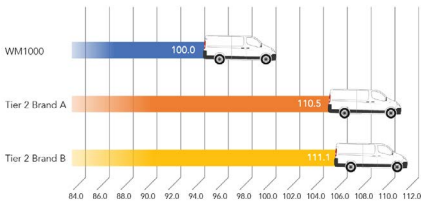
In all the graphs below, the longer the bar, the better the performance of the tire



SNOW ACCELERATION INDEX

METHOD: TCS ACCELERATION 5 - 30 KM/H -11°C

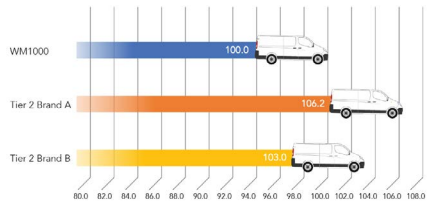
In all the graphs below, the longer the bar, the better the performance of the tire



ICE ACCELERATION INDEX

METHOD: TCS ACCELERATION 5 - 25 KM/H -8°C

In all the graphs below, the longer the bar, the better the performance of the tire



SNOW HANDLING INDEX

METHOD: LAP/SPLIT TIMES -14°C

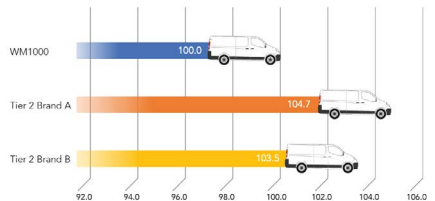
In all the graphs below, the longer the bar, the better the performance of the tire



ICE HANDLING INDEX

METHOD: LAP/SPLIT TIMES -15°C

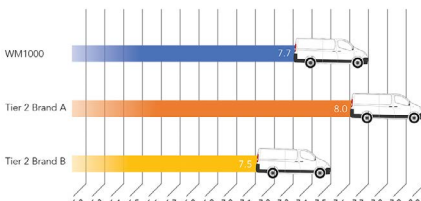
In all the graphs below, the longer the bar, the better the performance of the tire



SNOW SUBJECTIVE EVALUATION RATING

SUBJECTIVE EVALUATION PARAMETERS

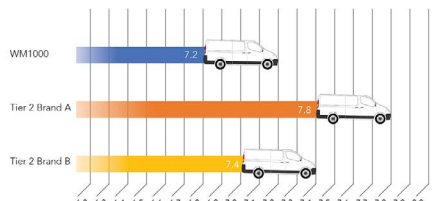
Steering, Controllability, Acceleration & Deceleration



ICE SUBJECTIVE EVALUATION RATING

SUBJECTIVE EVALUATION PARAMETERS

Steering, Controllability, Acceleration & Deceleration





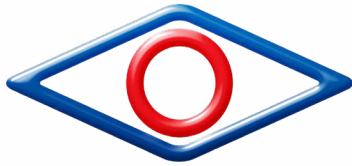
UPCOMING ALL SEASON PATTERNS



EK7000 4S



MK7000 4S



OTANI®

DRIVING CONFIDENCE

MADE IN THAILAND

